

DRAFT

DRAFT

FINAL SURVEY REPORT
INTENSIVE LEVEL SURVEY
OF THE CITY OF LAWTON'S OLD TOWN NORTH HISTORIC DISTRICT
40-94-90063.015

DRAFT

Submitted by:

Oklahoma Historic Preservation Survey
Department of History
Oklahoma State University
Stillwater, Oklahoma 74078-0611

Submitted to:

State Historic Preservation Office
2704 Villa Prom
Shepard Mall
Oklahoma City, OK 73107

TABLE OF CONTENTS

ABSTRACT	1
INTRODUCTION	3
RESEARCH DESIGN AND EXECUTION	6
PROJECT OBJECTIVES	9
AREA SURVEYED	10
KINDS OF PROPERTIES SOUGHT AND IDENTIFIED	13
PROPERTIES IDENTIFIED AND DOCUMENTED	16
DISTRICT ^(C) WARRANTING FURTHER STUDY	110
CONTRIBUTING RESOURCES IN OLD TOWN NORTH HISTORIC DISTRICT	114
NON-CON ^(C) TRIBUTING RESOURCES IN OLD TOWN NORTH HISTORIC DISTRICT	152
HISTORIC CONTEXT	
OVERVIEW	171
PROPERTY TYPE ANALYSIS	181
SUMMARY	186
BIBLIOGRAPHY	187

MAPS

Oklahoma SHPO Management Regions--Historic Component	11
Study Area	12
All Resources Documented in Old Town North Historic District: By Map Coordinates72 - 89
All Resources Documented in Old Town North Historic District: By Period of Construction	91 - 109
.	

ABSTRACT

This document serves as the final survey report of the Intensive Level Survey of the City of Lawton's Old Town North Historic District. The Oklahoma Historic Preservation Survey, an adjunct of the Department of History at Oklahoma State University, performed the survey between September 1, 1994 and August 31, 1995 under a contract (40-94-90063.017) with the State Historic Preservation Office of the Oklahoma Historical Society. Project personnel conducted the survey in order to: (1) identify and minimally document individual historic resources within the study area which meet eligibility requirements for the National Register of Historic Places; (2) identify and document resources in the study area which warrant further study for possible National Register inclusion; (3) characterize portions of the study area devoid of historic resources; and, (4) identify reference material useful for completing National Register nominations of properties deemed worthy of further study. In essence, the project sought to identify, document, and evaluate all resources within the study area and determine whether they contribute to the Old Town North Historic District. This included determining whether the study area indeed constitutes a National Register District, and if so, what the boundaries of that district should be. To facilitate this entire process, a historic narrative of the neighborhood's development up to 1954 was also prepared. This narrative provides the context necessary to evaluate the historic significance, or meaning, of these properties. ^{Lawton}

The survey covered what is known as the Old^{Lawton} North Historic District of Lawton, which covers a forty-eight block, largely residential area just north of the central business district. The study area~~s~~ lies within the State Historic Preservation Office's Management Region #7 and consists of .5 square miles (320 acres), combined. A total of 835 resources were minimally documented, many of which also

contain detached garages converted into apartments, which brings the actual number of resources in the district to well over a thousand. Of the main core of ^{the} 825 resources readily visible from the street, 570 (68.3%) were determined as contributing to the potential Old Town North Historic District. This report, together with the accompanying individual property files, should facilitate land-use management in the study area in a manner sensitive to its historic resources and in compliance with Section 106 of the National Historic Preservation Act of 1966, As Amended.

INTRODUCTION

The city of Lawton, like many Oklahoma communities, sprang into almost instantaneous existence following the opening of lands formerly held by Native Americans. Thus in July of 1901, lands previously dedicated to the Kiowa, Comanche, and Arapaho were distributed to anxious white settlers through a lottery. By the end of the year, the young city of Lawton boasted a population of about 8,000.

Why was it the most important?
After its initial settlement, the community continued to grow, at least physically, through the platting of new additions. The most important of these was the North Addition, which residents today refer to as Old Town North. U.S. Senator and Lawton resident Thomas Gore helped make the addition possible by securing Congressional approval for a bill allowing development on a 320 acre site on which an Indian school had been planned. This paved the way for the platting of the North Addition in 1908. All of the blocks in ^{the} addition, which doubled the young city's size, were dedicated for residential use, with the exception of two parcels reserved for schools and another for a park.

The auctioning of lots in the North Addition occurred during the middle of August. The federal government supervised the dispersal, conducting the auction from a horse-drawn platform which moved from lot-to-lot and block-to-block. Ultimately, 984 lots in 63 blocks garnered a total of \$280,985, well above the appraise^d value of the addition prior to the sale. The most valuable parcels proved to be those along Fort Sill Boulevard, which also was along the route of a proposed trolley line connecting Lawton to nearby Fort Sill.

Despite the success of the auction, the North Addition developed very slowly. No restrictions were placed on the number of ~~X~~ lots an individual (cold) buy, and subsequently, ^{unc}speculation among Lawton's more affluent citizens abounded. Many who came to purchase parcels and build homes in the addition purchased their land not from the federal government at auction, but rather from these private speculators. As a

result, much of the area remained undeveloped well into the 1920s.

The first real spurt of growth came during the period of World War I, when the entire city expanded under the influence of wartime mobilization at Fort Sill. In 1910, there had been only thirty homes in the district; in 1914 alone thirty more were built, followed by an additional forty-five in 1920. During this period, many of the city's most prominent citizens erected homes in the North Addition, including U.S. Senator J. Elmer Thomas. [The Washington School and a number of churches also appeared at this time, and the city provided an infrastructure that included water, sewer, and electrical lines.] ^{see} _{pg. 110}

Growth slowed to a steady pace in the post-war decade and managed to continue even during the Great Depression. The addition received improvements from New Deal relief programs, most notably sidewalks and curbing laid by the Works Progress Administration (WPA). Also, several of the city's wealthy residents who managed to escape the economic crisis built large, highly stylized homes in the addition between 1934 and 1937.

Lawton began assuming its current character as the major city in southwestern Oklahoma due to its expansion during the World War II and Cold War eras. Beginning in the 1940s, it experienced the transformation from a small city to a large one having strip commercial developments and tract housing. This change, of course, stemmed g\from the growing importance of Fort Sill during and after World War II.

By World War II, the North Addition was all but fully developed. The largest impact of the World War II-Cold War boom was the conversion of garages and other outbuildings to apartments for military personnel stationed at Fort Sill. While this represents a degradation on the integrity of resources, the visual impact of this transformation is minimal. Most converted garage apartments sit at the rear of the houses and are accessible only through the alleys.

The North Addition deserves recognition as a National Register

district. Its significance primarily is architectural, as it contains the largest concentration of pre-World War II housing in the city. This includes one of the largest concentrations of Craftsman/Bungalow style homes in southwestern Oklahoma. The district also contains a wide variety of other architectural styles, including National Folk, Tudor Revival, Colonial Revival, ~~Spanish~~ ^{Spanish Colonial Revival} Mission, and International. The district also has historic significance as the first major residential area in the city, and many of its residents were prominent citizens. In short, the Old Town North Historic District~~x~~ is the best physical representation of what Lawton was like prior to its fundamental transformation during and after World War II.

RESEARCH DESIGN AND EXECUTION

This project's research design followed professional methodological standards, as well as the "Archeology and Historic Preservation: Secretary of the Interior Standards and Guidelines" (Federal Register, 29 September 1983: 44716-44742). It intended for each step in the process, as much as possible, to build upon the results of the previous task, thus making for a time- and cost-efficient effort.

The initial phase centered on research into the history of the Old Town North neighborhood and how it relates to the history of Lawton. This process built on an earlier reconnaissance level survey of Lawton by the subgrantee, which originally identified the study area as a potential National Register district. Accordingly, the development of a historic narrative focusing on the study areas' past began immediately and was continually refined during the course of the project. This activity served two primary purposes. First, it helped identify property types and specific historic properties which the survey might identify. Second, when applied with the National Register Criteria for Evaluation, it facilitated the determination of a property's significance in relationship to the broad patterns of the towns' historic, archeological, architectural, and engineering heritage. In short, it provided the link between a property as it exists today and the past which gives it meaning. This narrative is included in a separate section of this report. This work was completed primarily by the field surveyor, Eric Griffitts, under the principal investigator's supervision.

Before commencing the actual field survey, Mr. Griffitts was also trained for this phase of the project. This included familiarization with the Historic Preservation Resource ^{Identification} ~~Inventory~~ Form; National Register Bulletin Twenty Four: Guidelines for Local Surveys: A Basis for Preservation Planning; National Register Bulletin Fifteen: Guidelines for Applying the National Register Criteria for Evaluation;

the anticipated project products; and various administrative details. At this time, ~~she~~ also conducted additional research in directories, Sanborn Maps, topographical maps, and other sources in an attempt to specify likely extant properties.

Once the training and additional research were completed, the surveyor entered the field. In accordance to standard practice for an intensive level survey, he documented standing building~~s~~ structure~~s~~ site~~s~~ and object~~s~~ in the study area regardless of their age. Documentation required completing a Historic Preservation Resource ^{Identification} ~~Inventory~~ Form and photographs of each property's primary elevations. While performing these tasks, the surveyor also began making determinations of whether individual resources could be considered as contributing or non-contributing to the district. Whenever possible, the surveyor complemented the existing research with information from oral interviews with local citizens and material available locally. All this research enabled completion of the Historic Preservation Resource Identification Form as thoroughly as possible.

Even while the field work progressed, preparation of the photodocumentation began. Rolls of film were collected and developed onto contact sheets. From these, project personnel determined which exposures needed to be processed into 5" X 7" black-and-white glossy prints.

All information for completing the individual Historic Preservation Resource Identification Forms was compiled into a data base using the dBase IV program. From this data, the actual Identification Forms were ultimately generated.

The final phase of the project entailed compiling the survey data into its final form. This included final revisions of the Identification Forms, specifically designating individual resources as contributing or non-contributing, preparing maps, compiling individual property files, and composing the final report. In the final analysis,

this proved a gargantuan undertaking. Consequently it took much longer than ever anticipated.

PROJECT OBJECTIVES

Following the guidelines set forth in R.F.P. #40-94-90063.015, this project sought to fulfill the following objectives.

The first was to identify within the study area~~s~~ those individual resources, which on the basis of age (usually at least fifty years old) and retention of integrity, contribute to the Old Town North Historic District. The identification of these resources involved minimal documentation in accordance to State Historic Preservation Office requirements -- completion of a Historic Preservation Resource Identification Form for each and photodocumentation of its primary elevations. From this data, and drawing upon information from the historic narrative prepared in conjunction with this project, preliminary determinations of its contributory status were made for each resource.

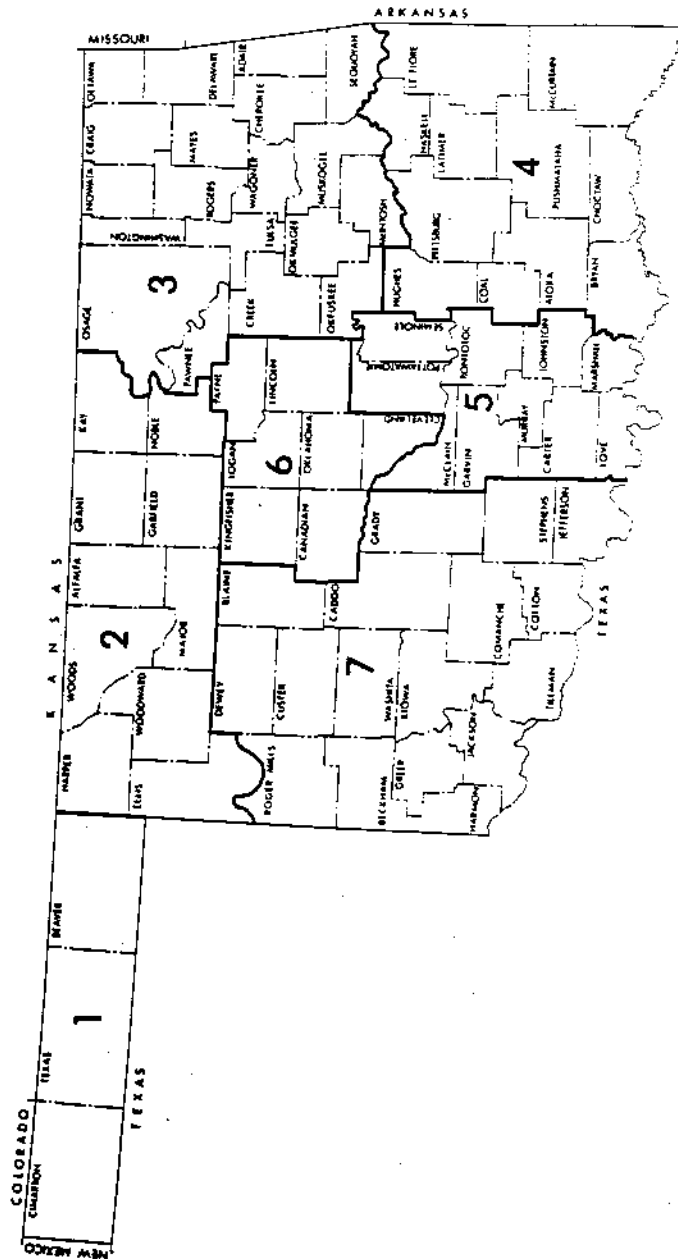
Fulfillment of this first objective allowed for completion of the second. This involved the identification and documentation of resources documented during the survey which do not contribute to the Old Town North Historic District. The justifications for a resources determination as non-contributing were based primarily on the loss of historic integrity or insufficient age.

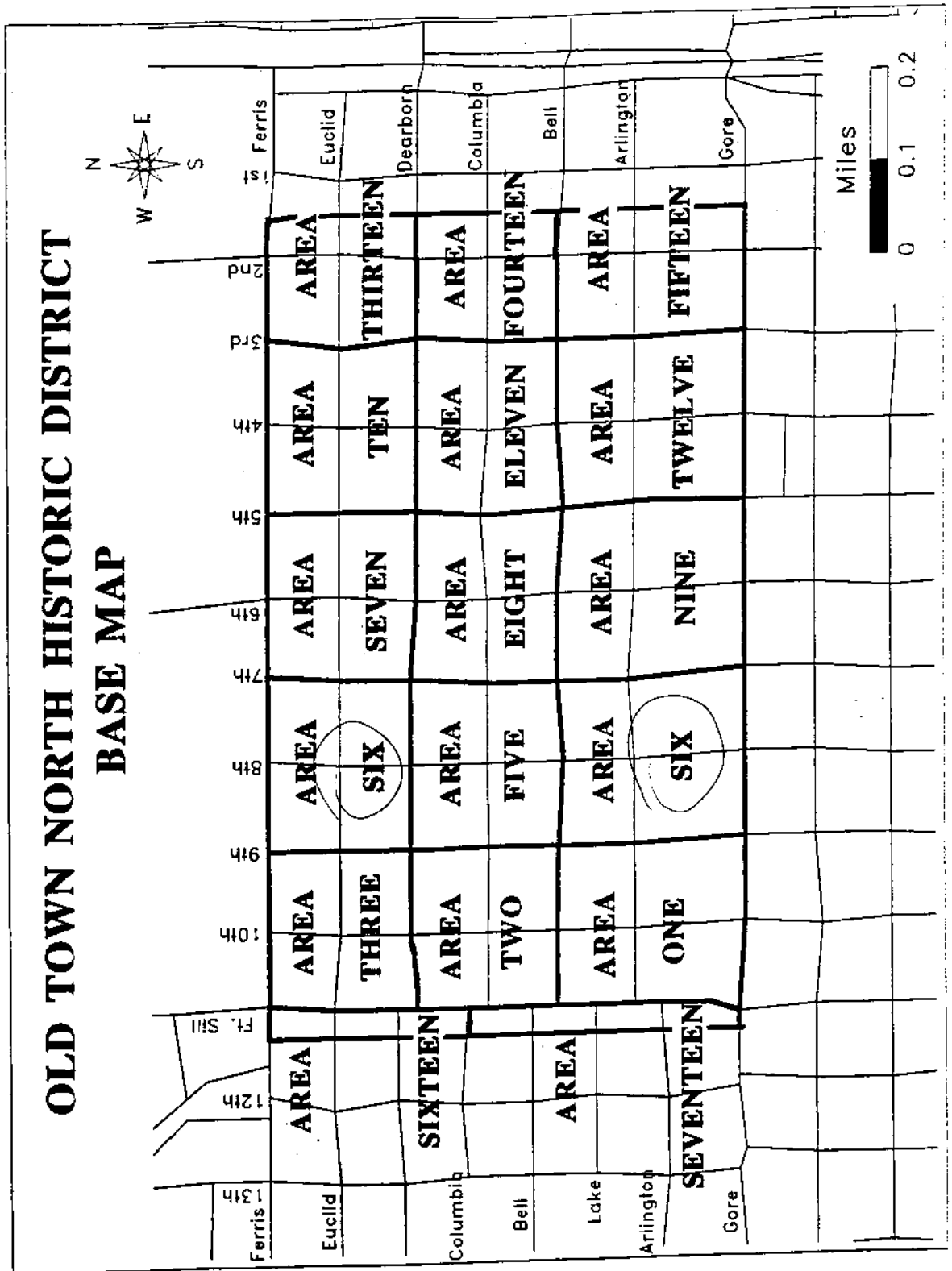
A third major objective concerned the identification of reference materials required to complete a future National Register nomination of the Old Town North District. Many of these sources were noted while preparing the historic narrative, relying heavily on the bibliography compiled for the earlier reconnaissance level survey of Lawton. Others came to light during the course of this survey. An annotated bibliography of these materials comprises a separate section of this report.

AREA SURVEYED

The study area for this survey consisted of a forty-eight block residential area in Lawton, Oklahoma. Covering approximately .5 square miles (320 acres), the study area~~x~~ lies within the State Historic Preservation Office's Management Region Seven. It is bordered on the north by Ferris Avenue, on the east by Second Street, on the south by Gore Boulevard, and on the west by Fort Sill Boulevard. Maps depicting both the management region and study area follow.

OKLAHOMA STATE HISTORIC PRESERVATION OFFICE
MANAGEMENT REGIONS
HISTORIC COMPONENT





KINDS OF PROPERTIES SOUGHT AND IDENTIFIED

During the field work, all standing buildings, structures, sites, and objects ^{were} identified and documented. In order to facilitate the determination of their contributory status, all were divided into property types. By definition, property types share similar physical or associative characteristics. The property types defined for this project concentrate on their shared associative, or functional, qualities. Since the study area consisted mostly of homes, residential properties obviously dominate. However, the proposed district is bordered on the south and west by some commercial resources, and it also contains a school and a park. The designations essentially follow the various general categories and corresponding functions of property used in completing National Register of Historic Places forms. This should enable easy identification of all resources of the same property type by manipulation of the "Historic Function" field once the data on the Historic Preservation Resource Identification Form has been entered into the State Historic Preservation Office's collective data base.

Residential Properties

The Old Town North Historic District is, above all else, residential in character. Therefore, the survey expected to encounter houses manifesting the architectural styles most commonly employed on the Southern Plains ^{during} ~~its~~ period of most intensive development, 1908-1940. Among Victorian houses these include Queen Anne and Folk Victorian, and Eclectic houses such as Colonial Revival, ^{Classical Revival} ~~Neoclassical~~, Tudor Revival, Mission ^{Bungalow} Revival, Prairie, ^{School} Craftsman, Modernistic, and International. Since much of the addition remained in speculators' hands and undeveloped into the 1920s, the Craftsman or Bungalow style was expected to dominate.

Commercial Properties

The Old Town North Historic District lies directly north of the central business district. Thus, one would expect to find commercial properties along its southern edge, especially since this border, Gore Boulevard, is the city's main east-west thoroughfare. Also, the northwest corner of the district, where Fort Sill Boulevard and Ferris Avenue intersect, is another area of commercial development.

Accordingly, one would expect to find examples of commercial style architecture_x at these locations. Given that most of this commercial development is relatively recent, the simple one-story rectangular concrete block buildings, typical of strip commercial development and stressing utility over style, dominate. Lacking sufficient age (at least fifty years old) and contributing nothing to the residential character of the district, most of these commercial properties can be excluded from the district () by not including the south side of Gore Boulevard within its borders. The presence of a meridian along the boulevard, moreover, makes this all the more logical.

Education Properties

The survey expected to locate and document at least one education-related resource. The Washington School was built shortly after the addition was platted_x on a parcel reserved for that purpose. As such it became the neighborhood school, and important social institution, for the district.

Religious Properties

The survey fully expected to encounter at least some churches throughout the study area. Those living in this large residential area were mostly native-born whites, so it was anticipated that Protestant denominations would dominate. Their architectural style, it was thought, would range from the simple to the monumental, depending on the size and affluence of the individual congregations. The survey indeed

identified and documented a number of such churches.

Such as?

Recreational/Cultural Properties

Recreational and cultural properties serve as physical links to how people in the past utilized their leisure time. Research indicated that the original platting of the North Addition reserved ^{an} area for a park. Accordingly, ⁽¹⁾ the survey expected to locate and document at least one recreational and cultural resource, the Thirty-fifth Infantry Park in the heart of the study area. Also identified and documented were the McMahon Memorial Auditorium, Museum of the Great Plains, and Elmer Thomas Park, all situated on the north side of Ferris Avenue. Since these ^{not (?)} do ~~not~~ reflect the residential character of the district, they can ~~be~~ eliminated from it by making the south side of Ferris Avenue the ⁽¹⁾ north border.

Automobile-Related Properties

Especially after the First World War, the automobile revolutionized American society. People became increasingly mobile, allowing them to travel greater distances both to reach work and in the pursuit of leisure. Accordingly, a variety of related industries emerged to serve the motoring public. Most notable for the built environment was the gas station and motor court, tourist camp, and motel.

Several automobile dealerships and service stations line the periphery of the study area. All rest on the south side of Gore Boulevard and can be excluded from the district by making the north side of Gore the boundary.

PROPERTIES IDENTIFIED AND DOCUMENTED

The following is a list of all properties documented within the study area regardless of whether or not they contribute to the district. Documentation of each property consisted of completing the Historic Preservation Resource ^{Identification} ~~Inventory~~ Form and the photodocumentation of its primary elevations. The photographs were developed as 5" X 7" black and white glossy prints.

The list includes the name of the property, its address or location, map coordinate, and index numbers for the location of its negatives. The map coordinate refers to the number assigned that property so that it can be easily located on the maps which follow the list. The index number identifies the roll number for the ^{need to finish} ~~sentence~~ photodocumentation. The acronym "LAW" Lawton's Old Town North District. The final series of numbers refers to the exposure number. Thus, the designation, "1 ~~LAW~~ 19, 20" refers to film roll number 1 and exposures 19, 20 as the photodocumentation for that property. All negatives and contact sheets have been submitted to the State Historic Preservation Office ~~X~~ in clear, archival holders. Each holder is identified by the roll number and project acronym. A separate index also accompanies the negatives and contact sheets.

The square map coordinates indicate those resources determined as contributing to the Old Town North Historic District. Those deemed as non-contributing have been enclosed with a circle. For ease of presentation, the study areas have each been divided into several portions to allow better representation of the properties. A map for each was prepared, and a base map and key serves as a guide to these section maps, which appear at the end of the list.

The properties listed were identified, first, by driving through the entire study area. During this process, large concentrations of non-contributing resources were determined. All of the study area was

then walked through and all standing resources documented, regardless of age.

ADAMS CORNER STORE 1 NORTHWEST SECOND STREET 66 LAW 24a; 78 LAW 21a	001
BUCK'S PAWN SHOP, REDNECK TAVERN, KWICK 101-105 NORTHWEST SECOND STREET 64 LAW 17a, 19a	002
WINGS AND THINGS 108 NORTHWEST SECOND STREET 64 LAW 12a, 13a	003
BIANCO'S ITALIAN RESTAURANT 113 NORTHWEST SECOND STREET 64 LAW 20a, 21a	004
DAN WILSON'S USED CARS 201 NORTHWEST SECOND STREET 64 LAW 6a, 7a X X X	005
GUEST CAR SALES 206 NORTHWEST SECOND STREET 64 LAW 8a, 9a	006
TOUCH OF GLASS DETAIL SHOP 213 NORTHWEST SECOND STREET 64 LAW 4a, 5a	007
NORTH SIDE AUTO SALES 214 NORTHWEST SECOND STREET 63 LAW 24a; 64 LAW 3a	008
BUTCH'S AUTO REPAIR 301 NORTHWEST SECOND STREET 63 LAW 20, 21	009
ADVANCED FLOORS AND MORE 303 NORTHWEST SECOND STREET 63 LAW 19, 22	010
A & W USED CARS 304 NORTHWEST SECOND STREET 63 LAW 23, 24	011
CATHY'S BOUTIQUE 305 NORTHWEST SECOND STREET 63 LAW 17, 18	012
JACKSON'S LAUNDROMAT AND DRY CLEANING #4 308 NORTHWEST SECOND STREET 63 LAW 13, 14	013
DAN CRAWFORD AUTOMOTIVE 309 NORTHWEST SECOND STREET 63 LAW 15, 16	014
SECOND STREET ICE DOCK 315 NORTHWEST SECOND STREET 63 LAW 11, 12	015

LAWTON GUYS AND DOLLS 405 NORTHWEST SECOND STREET 63 LAW 3, 6	016
MILEX SERVICE CENTER 412 NORTHWEST SECOND STREET 63 LAW 5; 82 LAW 28	017
WEST BROTHERS AUTO SALES 502 NORTHWEST SECOND STREET 62 LAW 23a; 63 LAW 4	018
VAN'S FINA STATION 510 NORTHWEST SECOND STREET 62 LAW 21a, 22a	019
REFRESHMENT'S VENDING AND FOOD SERVICE 511 NORTHWEST SECOND STREET (SOUTH) 62 LAW 24a; 82 LAW 30	020
COCA-COLA BOTTLING COMPANY 511 NORTHWEST SECOND STREET (NORTH) 62 LAW 19a, 20a	021
RAMADA INN 601 NORTHWEST SECOND STREET 62 LAW 17a, 18a	022
DAN MULLINS' USED CARS 3 SOUTHWEST SECOND STREET 66 LAW 21, 22	023
AYERS IMPORTS 4 SOUTHWEST SECOND STREET 66 LAW 23, 24	024
RESIDENCE 2 NORTHWEST THIRD STREET 53 LAW 36a; 54 LAW 33	025
RESIDENCE 4 NORTHWEST THIRD STREET 54 LAW 1, 2	026
CURTIS KEY AND LOCK SERVICE 5 NORTHWEST THIRD STREET 53 LAW 33, 34	027
RESIDENCE 7 NORTHWEST THIRD STREET 53 LAW 31, 32	028
RESIDENCE 8 NORTHWEST THIRD STREET 54 LAW 3, 4	029
RESIDENCE 10 NORTHWEST THIRD STREET 54 LAW 6, 7	030
RESIDENCE 104 NORTHWEST THIRD STREET	

52 LAW 13a, 14a	031
RESIDENCE 106 NORTHWEST THIRD STREET 52 LAW 15a, 16a	032
RESIDENCE 108 NORTHWEST THIRD STREET 53 LAW 2; 52 LAW 36a	033
WHITLEY APARTMENTS 109-115 NORTHWEST THIRD STREET 53 LAW 5, 6	034
RESIDENCE 110 NORTHWEST THIRD STREET 52 LAW 36a; 53 LAW 1	035
RESIDENCE 201 NORTHWEST THIRD STREET 35 LAW 4, 5	036
RESIDENCE 203 NORTHWEST THIRD STREET 35 LAW 2, 3	037
RESIDENCE 204 NORTHWEST THIRD STREET 35 LAW 16, 17	038
RESIDENCE 205 NORTHWEST THIRD STREET 74 LAW 35, 36	039
RESIDENCE 206 NORTHWEST THIRD STREET 35 LAW 18, 19	040
RESIDENCE 207 NORTHWEST THIRD STREET 34 LAW 23a, 24a	041
RESIDENCE 208 NORTHWEST THIRD STREET 35 LAW 20, 21	042
RESIDENCE 209 NORTHWEST THIRD STREET 34 LAW 21a, 22a	043
RESIDENCE 211 NORTHWEST THIRD STREET 34 LAW 12a, 13a	044
RESIDENCE (APARTMENTS) 402-412 NORTHWEST THIRD STREET 12 LAW 1, 2	045
RESIDENCE 407 NORTHWEST THIRD STREET 15 LAW 8, 9	046

PARKVIEW APARTMENTS 511 NORTHWEST THIRD STREET 15 LAW 10	048
RESIDENCE 506 NORTHWEST THIRD STREET 15 LAW 12, 13	049
RESIDENCE 107 NORTHWEST FOURTH STREET 52 LAW 29a, 30a	050
RESIDENCE 108 NORTHWEST FOURTH STREET 51 LAW 11, 12	051
RESIDENCE 109 NORTHWEST FOURTH STREET 52 LAW 27a, 28a	052
RESIDENCE 112 NORTHWEST FOURTH STREET 51 LAW 9, 10	053
RESIDENCE 206 NORTHWEST FOURTH STREET 37 LAW 6, 7	054
RESIDENCE 207 NORTHWEST FOURTH STREET 36 LAW 10, 11	055
RESIDENCE 208 NORTHWEST FOURTH STREET 37 LAW 9, 10	056
RESIDENCE 212 NORTHWEST FOURTH STREET 37 LAW 11, 12	057
COLUMBIA SQUARE APARTMENTS 305 NORTHWEST FOURTH STREET 33 LAW 18, 19	058
RESIDENCE 306 NORTHWEST FOURTH STREET 33 LAW 13, 14	059
RESIDENCE 401 NORTHWEST FOURTH STREET 13 LAW 1, 2	060
RESIDENCE 407 NORTHWEST FOURTH STREET 12 LAW 16, 17	061
RESIDENCE 505 NORTHWEST FOURTH STREET 11 LAW 1; 81 LAW 20	062
RESIDENCE 504 NORTHWEST FOURTH STREET	

11 LAW 5, 6	063
RESIDENCE 508 NORTHWEST FOURTH STREET 82 LAW 24, 25	064
RESIDENCE 7 NORTHWEST FIFTH STREET 55 LAW 9a, 10a	065
RESIDENCE 8 NORTHWEST FIFTH STREET 56 LAW 1, 2	066
RESIDENCE 104 NORTHWEST FIFTH STREET 50 LAW 8, 9	067
RESIDENCE 105 NORTHWEST FIFTH STREET 83 LAW 17, 18	068
RESIDENCE 107 NORTHWEST FIFTH STREET 50 LAW 30, 31	069
RESIDENCE 108 NORTHWEST FIFTH STREET 50 LAW 6, 7	070
RESIDENCE 207 NORTHWEST FIFTH STREET 37 LAW 23, 24	071
RESIDENCE 208 NORTHWEST FIFTH STREET 39 LAW 24; 40 LAW 1a	072
RESIDENCE 305 NORTHWEST FIFTH STREET 33 LAW 4, 5	073
RESIDENCE 307 NORTHWEST FIFTH STREET 33 LAW 2a, 3a	074
RESIDENCE 311 NORTHWEST FIFTH STREET 32 LAW 24a; 33 LAW 1	075
RESIDENCE 405 NORTHWEST FIFTH STREET 13 LAW 21, 22	076
RESIDENCE 406 NORTHWEST FIFTH STREET 82 LAW 22, 23	077
RESIDENCE 407 NORTHWEST FIFTH STREET 13 LAW 17, 18	078

RESIDENCE 501 NORTHWEST FIFTH STREET 10 LAW 12, 13	079
RESIDENCE 505 NORTHWEST FIFTH STREET 10 LAW 14, 15	080
RESIDENCE 506 NORTHWEST FIFTH STREET 10 LAW 20, 21	081
DALE HOUSE 507 NORTHWEST FIFTH STREET 10 LAW 16, 17	082
RESIDENCE 508 NORTHWEST FIFTH STREET 10 LAW 18, 19	083
HAIR STYLISTS 7 NORTHWEST SIXTH STREET 56 LAW 12, 13	084
RESIDENCE 104 NORTHWEST SIXTH STREET 48 LAW 36a; 81 LAW 34	085
RESIDENCE 106 NORTHWEST SIXTH STREET 48 LAW 35, 36	086
RESIDENCE 108 NORTHWEST SIXTH STREET 49 LAW 22, 23	087
RESIDENCE 207 NORTHWEST SIXTH STREET 39 LAW 15, 16	088
RESIDENCE 208 NORTHWEST SIXTH STREET 40 LAW 11a, 12a	089
RESIDENCE 209 NORTHWEST SIXTH STREET 39 LAW 13, 14	090
RESIDENCE 308 NORTHWEST SIXTH STREET 81 LAW 30, 31	091
RESIDENCE 310 NORTHWEST SIXTH STREET 81 LAW 28, 29	092
RESIDENCE 312 NORTHWEST SIXTH STREET 81 LAW 26, 27	093
RESIDENCE 401 NORTHWEST SIXTH STREET	

23 LAW 12, 13	094
RESIDENCE 406 NORTHWEST SIXTH STREET 20 LAW 21, 22	095
RESIDENCE 407 NORTHWEST SIXTH STREET 20 LAW 13; 23 LAW 15	096
RESIDENCE 408 NORTHWEST SIXTH STREET 20 LAW 19, 20	097
RESIDENCE 409 NORTHWEST SIXTH STREET 23 LAW 14; 81 LAW 24, 25	098
RESIDENCE 509 NORTHWEST SIXTH STREET 8 LAW 15; 81 LAW 23	099
RESIDENCE 510 NORTHWEST SIXTH STREET 8 LAW 9; 7 LAW 12	100
RESIDENCE 3 NORTHWEST SEVENTH STREET 56 LAW 27, 28	101
RESIDENCE 7 NORTHWEST SEVENTH STREET 56 LAW 25, 26	102
RESIDENCE 8 NORTHWEST SEVENTH STREET 83 LAW 0 1 <i>OK 10</i>	103
RESIDENCE 9 NORTHWEST SEVENTH STREET 56 LAW 23, 24	104
RESIDENCE 11 NORTHWEST SEVENTH STREET 56 LAW 21, 22	105
RESIDENCE 105 NORTHWEST SEVENTH STREET 49 LAW 1, 2	106
RESIDENCE 107 NORTHWEST SEVENTH STREET 49 LAW 3, 4	107
RESIDENCE 108 NORTHWEST SEVENTH STREET 47 LAW 35, 36	108
RESIDENCE 206 NORTHWEST SEVENTH STREET 40 LAW 18a, 19a	109

RESIDENCE 207 NORTHWEST SEVENTH STREET 40 LAW 16a, 17a	110
RESIDENCE 208 NORTHWEST SEVENTH STREET 40 LAW 20a, 21a	111
RESIDENCE 305 NORTHWEST SEVENTH STREET 76 LAW 22, 23	112
RESIDENCE 308 NORTHWEST SEVENTH STREET 81 LAW 35, 36	113
RESIDENCE 401 NORTHWEST SEVENTH STREET 24 LAW 5, 12	114
RESIDENCE 405 NORTHWEST SEVENTH STREET 24 LAW 6, 7	115
RESIDENCE 407 NORTHWEST SEVENTH STREET 21 LAW 9, 10	116
RESIDENCE 408 NORTHWEST SEVENTH STREET 21 LAW 16; 83 LAW 4	117
RESIDENCE 409 NORTHWEST SEVENTH STREET 21 LAW 7, 8	118
RESIDENCE 507 NORTHWEST SEVENTH STREET 8 LAW 17, 18	119
RESIDENCE 510 NORTHWEST SEVENTH STREET 8 LAW 1; 82 LAW 2	120
BLESSED SACRAMENT CATHOLIC CHURCH 12 SOUTHWEST SEVENTH STREET 66 LAW 10, 11	121
RESIDENCE 104 NORTHWEST EIGHTH STREET 47 LAW 0, 1	122
RESIDENCE 206 NORTHWEST EIGHTH STREET 42 LAW 32, 33	123
RESIDENCE 207 NORTHWEST EIGHTH STREET 41 LAW 17, 18	124
RESIDENCE 212 NORTHWEST EIGHTH STREET	

43 LAW 11, 12	125
RESIDENCE 305 NORTHWEST EIGHTH STREET 31 LAW 11, 12	126
RESIDENCE 404 NORTHWEST EIGHTH STREET 22 LAW 21a, 22a	127
RESIDENCE 406 NORTHWEST EIGHTH STREET 22 LAW 19a, 20a	128
RESIDENCE 506 NORTHWEST EIGHTH STREET 4 LAW 4, 5	129
RESIDENCE 507 NORTHWEST EIGHTH STREET 5 LAW 16, 17	130
RESIDENCE 508 NORTHWEST EIGHTH STREET 4 LAW 6, 7	131
RESIDENCE 510 NORTHWEST EIGHTH STREET 4 LAW 8, 9	132
RESIDENCE 5 NORTHWEST NINTH STREET 58 LAW 17, 18	133
RESIDENCE 6 NORTHWEST NINTH STREET 59 LAW 26, 27	134
RESIDENCE 7 NORTHWEST NINTH STREET 58 LAW 15, 16	135
RESIDENCE 8 NORTHWEST NINTH STREET 59 LAW 28, 29	136
RESIDENCE 9 NORTHWEST NINTH STREET 58 LAW 13, 14	137
RESIDENCE 10 NORTHWEST NINTH STREET 59 LAW 30, 31	138
RESIDENCE 204 NORTHWEST NINTH STREET 44 LAW 4, 5	139
RESIDENCE 405 NORTHWEST NINTH STREET 25 LAW 1, 2	140

RESIDENCE 508 NORTHWEST NINTH STREET 2 LAW 18, 19	141
RESIDENCE 510 NORTHWEST NINTH STREET 2 LAW 20, 21	142
RESIDENCE 5 NORTHWEST TENTH STREET 59 LAW 9, 10	143
RESIDENCE 6 NORTHWEST TENTH STREET 60 LAW 12a, 13a	144
RESIDENCE 105 NORTHWEST TENTH STREET 46 LAW 10a, 11a	145
RESIDENCE 107 NORTHWEST TENTH STREET 45 LAW 29, 30	146
RESIDENCE 207 NORTHWEST TENTH STREET 43 LAW 25, 26	147
RESIDENCE 305 NORTHWEST TENTH STREET 28 LAW 7, 8	148
RESIDENCE 307 NORTHWEST TENTH STREET 28 LAW 24a; 29 LAW 19a	149
RESIDENCE 308 NORTHWEST TENTH STREET 27 LAW 12, 13	150
RESIDENCE 405 NORTHWEST TENTH STREET 26 LAW 23a, 24a	151
RESIDENCE 406 NORTHWEST TENTH STREET 82 LAW 4, 5	152
RESIDENCE 505 NORTHWEST TENTH STREET 2 LAW 0, 1	153
RESIDENCE 506 NORTHWEST TENTH STREET 1 LAW 2, 3	154
RESIDENCE 507 NORTHWEST TENTH STREET 83 LAW 5, 6	155
RESIDENCE 508 NORTHWEST TENTH STREET	

83 LAW 7, 8	156
LOCAL FEDERAL BANK FSB 1 SOUTHWEST ELEVENTH STREET 65 LAW 0a, 1a	157
7 ELEVEN FOOD STORE AND CITGO GAS STATION 2 SOUTHWEST ELEVENTH STREET 65 LAW 2a, 3a	158
LA TOWNHOUSE IN THE CITY NIGHTCLUB 201 NORTHWEST ARLINGTON AVENUE 64 LAW 14a, 15a	159
D & W LAUNDROMAT, COURTESY AUTO SALES 206 NORTHWEST ARLINGTON, 16 NORTHWEST SECOND 64 LAW 18a, 22a	160
RESIDENCE 207 NORTHWEST ARLINGTON AVENUE 53 LAW 27, 28	161
RESIDENCE 209 NORTHWEST ARLINGTON AVENUE 53 LAW 25, 26	162
RESIDENCE 211 NORTHWEST ARLINGTON AVENUE 53 LAW 23, 24	163
RESIDENCE 213 NORTHWEST ARLINGTON AVENUE 53 LAW 21, 22	164
RESIDENCE 215 NORTHWEST ARLINGTON AVENUE 53 LAW 19, 20	165
RESIDENCE 216 NORTHWEST ARLINGTON AVENUE 53 LAW 29, 30	166
RESIDENCE 301 NORTHWEST ARLINGTON AVENUE 52 LAW 11a, 12a	167
RESIDENCE 302 NORTHWEST ARLINGTON AVENUE 54 LAW 8, 9	168
RESIDENCE 303 NORTHWEST ARLINGTON AVENUE 52 LAW 9a, 10a	169
RESIDENCE 304 NORTHWEST ARLINGTON AVENUE 54 LAW 10, 11	170
RESIDENCE 306 NORTHWEST ARLINGTON AVENUE 54 LAW 12, 13	171

RESIDENCE 307 NORTHWEST ARLINGTON AVENUE 52 LAW 7a, 8a	172
RESIDENCE 308 NORTHWEST ARLINGTON AVENUE 75 LAW 14, 15	173
RESIDENCE 309 NORTHWEST ARLINGTON AVENUE 52 LAW 6a, 33a	174
RESIDENCE 310 NORTHWEST ARLINGTON AVENUE 54 LAW 14, 15	175
RESIDENCE 311 NORTHWEST ARLINGTON AVENUE 52 LAW 4a, 5a	176
RESIDENCE 312 NORTHWEST ARLINGTON AVENUE 54 LAW 16, 17	177
RESIDENCE 313 NORTHWEST ARLINGTON AVENUE 52 LAW 2a, 3a	178
RESIDENCE 314 NORTHWEST ARLINGTON AVENUE 54 LAW 18, 19	179
RESIDENCE 315 NORTHWEST ARLINGTON AVENUE 52 LAW 0a, 1a	180
RESIDENCE 316 NORTHWEST ARLINGTON AVENUE 54 LAW 20, 21	181
RESIDENCE 401 NORTHWEST ARLINGTON AVENUE 51 LAW 14, 15	182
RESIDENCE 402 NORTHWEST ARLINGTON AVENUE 54 LAW 34, 35	183
RESIDENCE 403 NORTHWEST ARLINGTON AVENUE 51 LAW 16, 17	184
RESIDENCE 404 NORTHWEST ARLINGTON AVENUE 54 LAW 36, 36a	185
RESIDENCE 405 NORTHWEST ARLINGTON AVENUE 51 LAW 18, 19	186
RESIDENCE 406 NORTHWEST ARLINGTON AVENUE	

55 LAW 0a, 75 LAW 13	187
RESIDENCE 407 NORTHWEST ARLINGTON AVENUE 51 LAW 20, 21	188
RESIDENCE 408 NORTHWEST ARLINGTON AVENUE 55 LAW 1, 2	189
RESIDENCE 409 NORTHWEST ARLINGTON AVENUE 51 LAW 22, 23	190
RESIDENCE 410 NORTHWEST ARLINGTON AVENUE 55 LAW 3a, 4a	191
RESIDENCE 411 NORTHWEST ARLINGTON AVENUE 51 LAW 24, 25	192
RESIDENCE 413 NORTHWEST ARLINGTON AVENUE 51 LAW 26, 27	193
RESIDENCE 414 NORTHWEST ARLINGTON AVENUE 55 LAW 5a, 6a	194
RESIDENCE 415 NORTHWEST ARLINGTON AVENUE 51 LAW 28, 29	195
RESIDENCE 416 NORTHWEST ARLINGTON AVENUE 55 LAW 7a, 8a	196
RESIDENCE 501 NORTHWEST ARLINGTON AVENUE 50 LAW 10, 11	197
BEST HOUSE 502 NORTHWEST ARLINGTON AVENUE 55 LAW 25a, 26a	198
RESIDENCE 503 NORTHWEST ARLINGTON AVENUE 50 LAW 12, 13	199
RESIDENCE 505 NORTHWEST ARLINGTON AVENUE 50 LAW 14, 15	200
RESIDENCE 506 NORTHWEST ARLINGTON AVENUE 55 LAW 28a, 29a	201
RESIDENCE 507 NORTHWEST ARLINGTON AVENUE 50 LAW 16, 17	202

RESIDENCE 508 NORTHWEST ARLINGTON AVENUE 55 LAW 30a; 75 LAW 12	203
RESIDENCE 509 NORTHWEST ARLINGTON AVENUE 50 LAW 18, 19	204
RESIDENCE 510 NORTHWEST ARLINGTON AVENUE 55 LAW 31a, 32a	205
RESIDENCE 511 NORTHWEST ARLINGTON AVENUE 50 LAW 20, 21	206
RESIDENCE 512 NORTHWEST ARLINGTON AVENUE 55 LAW 33a, 34a	207
RESIDENCE 513 NORTHWEST ARLINGTON AVENUE 50 LAW 22, 23	208
RESIDENCE 514 NORTHWEST ARLINGTON AVENUE 55 LAW 35; 75 LAW 11	209
RESIDENCE 515 NORTHWEST ARLINGTON AVENUE 50 LAW 24, 25	210
JACKSON HOUSE 516 NORTHWEST ARLINGTON AVENUE 56 LAW 14, 15	211
BETHLEHEM BAPTIST CHURCH 602 NORTHWEST ARLINGTON AVENUE 56 LAW 16, 17	212
RESIDENCE 603 NORTHWEST ARLINGTON AVENUE 48 LAW 33, 34	213
RESIDENCE 605 NORTHWEST ARLINGTON AVENUE 48 LAW 31, 32	214
RESIDENCE 607 NORTHWEST ARLINGTON STREET 48 LAW 29, 30	215
RESIDENCE 609 NORTHWEST ARLINGTON AVENUE 48 LAW 27, 28	216
RESIDENCE 611 NORTHWEST ARLINGTON AVENUE 48 LAW 25, 26	217
RESIDENCE 613 NORTHWEST ARLINGTON AVENUE	

48 LAW 24; 49 LAW 28	218
RESIDENCE 614 NORTHWEST ARLINGTON AVENUE 56 LAW 19, 20	219
RESIDENCE 615 NORTHWEST ARLINGTON AVENUE 48 LAW 22, 23	220
RESIDENCE 701 NORTHWEST ARLINGTON AVENUE 48 LAW 2, 3	221
RESIDENCE 702 NORTHWEST ARLINGTON AVENUE 57 LAW 1, 2	222
RESIDENCE 704 NORTHWEST ARLINGTON AVENUE 57 LAW 3, 4	223
RESIDENCE 705 NORTHWEST ARLINGTON AVENUE 48 LAW 4, 5	224
RESIDENCE 706 NORTHWEST ARLINGTON AVENUE 57 LAW 5, 32	225
RESIDENCE 707 NORTHWEST ARLINGTON AVENUE 48 LAW 6, 21	226
RESIDENCE 708 NORTHWEST ARLINGTON AVENUE 55 LAW 6, 7	227
RESIDENCE 709 NORTHWEST ARLINGTON AVENUE 48 LAW 7, 8	228
RESIDENCE 710 NORTHWEST ARLINGTON AVENUE 57 LAW 8, 9	229
RESIDENCE 711 NORTHWEST ARLINGTON AVENUE 48 LAW 9, 15	230
RESIDENCE 712 NORTHWEST ARLINGTON AVENUE 57 LAW 10, 11	231
RESIDENCE 713 NORTHWEST ARLINGTON AVENUE 48 LAW 11, 14	232
RESIDENCE 714 NORTHWEST ARLINGTON AVENUE 57 LAW 12, 13	233

RESIDENCE 715 NORTHWEST ARLINGTON AVENUE 48 LAW 12, 13	234
RESIDENCE 716 NORTHWEST ARLINGTON AVENUE 57 LAW 14, 15	235
RESIDENCE 801 NORTHWEST ARLINGTON AVENUE 47 LAW 2, 3	236
RESIDENCE 802 NORTHWEST ARLINGTON AVENUE 57 LAW 36a; 58 LAW 2	237
RESIDENCE 803 NORTHWEST ARLINGTON AVENUE 47 LAW 4, 5	238
RESIDENCE 804 NORTHWEST ARLINGTON AVENUE 58 LAW 3, 4	239
RESIDENCE 805 NORTHWEST ARLINGTON AVENUE 47 LAW 6; 75 LAW 9	240
RESIDENCE 806 NORTHWEST ARLINGTON AVENUE 58 LAW 5, 6	241
RESIDENCE 807 NORTHWEST ARLINGTON AVENUE 47 LAW 7, 19	242
RESIDENCE 808 NORTHWEST ARLINGTON AVENUE 58 LAW 7, 8	243
RESIDENCE 809 NORTHWEST ARLINGTON AVENUE 47 LAW 9, 10	244
RESIDENCE 810 NORTHWEST ARLINGTON AVENUE 58 LAW 9, 26	245
RESIDENCE 811 NORTHWEST ARLINGTON AVENUE 47 LAW 11, 17	246
RESIDENCE 813 NORTHWEST ARLINGTON AVENUE 47 LAW 14, 18	247
RESIDENCE 814 NORTHWEST ARLINGTON AVENUE 58 LAW 10, 28	248
RESIDENCE 815 NORTHWEST ARLINGTON AVENUE	

47 LAW 15, 16	249
RESIDENCE 816 NORTHWEST ARLINGTON AVENUE 58 LAW 11, 12	250
RESIDENCE 901 NORTHWEST ARLINGTON AVENUE 46 LAW 2a, 3a	251
RESIDENCE 902 NORTHWEST ARLINGTON AVENUE 58 LAW 29, 30	252
RESIDENCE 904 NORTHWEST ARLINGTON AVENUE 58 LAW 31, 32	253
RESIDENCE 905 NORTHWEST ARLINGTON AVENUE 74 LAW 27, 28	254
RESIDENCE 906 NORTHWEST ARLINGTON AVENUE 58 LAW 33, 34	255
RESIDENCE 908 NORTHWEST ARLINGTON AVENUE 58 LAW 35, 36	256
RESIDENCE 910 NORTHWEST ARLINGTON AVENUE 58 LAW 36a; 59 LAW 2	257
RESIDENCE 911 NORTHWEST ARLINGTON AVENUE 46 LAW 6a, 7a	258
RESIDENCE 912 NORTHWEST ARLINGTON AVENUE 59 LAW 5, 6	259
RESIDENCE 914 NORTHWEST ARLINGTON AVENUE 59 LAW 3, 4	260
RESIDENCE 915 NORTHWEST ARLINGTON AVENUE 46 LAW 8a, 9a	261
RESIDENCE 916 NORTHWEST ARLINGTON AVENUE 59 LAW 7, 8	262
RESIDENCE 1001 NORTHWEST ARLINGTON AVENUE 45 LAW 26, 27	263
RESIDENCE 1002 NORTHWEST ARLINGTON AVENUE 59 LAW 34, 35	264

RESIDENCE 1003 NORTHWEST ARLINGTON AVENUE 45 LAW 25, 28	265
RESIDENCE 1005 NORTHWEST ARLINGTON AVENUE 45 LAW 24; 75 LAW 6	266
RESIDENCE 1006 NORTHWEST ARLINGTON AVENUE 59 LAW 36, 36a	267
RESIDENCE 1007 NORTHWEST ARLINGTON AVENUE 45 LAW 22, 23	268
RESIDENCE 1008 NORTHWEST ARLINGTON AVENUE 60 LAW 10a, 11a	269
R & R BUMPER 205 NORTHWEST BELL AVENUE 64 LAW 10a, 11a	270
RESIDENCE 207 NORTHWEST BELL AVENUE 35 LAW 12, 13	271
RESIDENCE 208 NORTHWEST BELL AVENUE 53 LAW 12, 13	272
RESIDENCE 209 NORTHWEST BELL AVENUE 35 LAW 10, 11	273
RESIDENCE 210 NORTHWEST BELL AVENUE 53 LAW 10, 11	274
RESIDENCE 211 NORTHWEST BELL AVENUE 35 LAW 8, 9	275
RESIDENCE 212 NORTHWEST BELL AVENUE 53 LAW 8, 9	276
RESIDENCE 213 NORTHWEST BELL AVENUE 35 LAW 6, 7	277
RESIDENCE 214 NORTHWEST BELL AVENUE 53 LAW 7, 15	278
RESIDENCE 301 NORTHWEST BELL AVENUE 35 LAW 14, 15	279
RESIDENCE 302 NORTHWEST BELL AVENUE	

52 LAW 17a, 18a	280
RESIDENCE 303 NORTHWEST BELL AVENUE 36 LAW 17, 18	281
RESIDENCE 305 NORTHWEST BELL AVENUE 36 LAW 19, 20	282
RESIDENCE 306 NORTHWEST BELL AVENUE 53 LAW 3, 4	283
RESIDENCE 307 NORTHWEST BELL AVENUE 36 LAW 21, 22	284
RESIDENCE 308 NORTHWEST BELL AVENUE 52 LAW 19a, 34a	285
RESIDENCE 309 NORTHWEST BELL AVENUE 36 LAW 23; 37 LAW 3	286
RESIDENCE 310 NORTHWEST BELL AVENUE 52 LAW 20a, 21a	287
RESIDENCE 311 NORTHWEST BELL AVENUE 36 LAW 24; 37 LAW 4	288
RESIDENCE 312 NORTHWEST BELL AVENUE 52 LAW 22a, 23a	289
RESIDENCE 313 NORTHWEST BELL AVENUE 36 LAW 25; 37 LAW 5	290
RESIDENCE 314 NORTHWEST BELL AVENUE 52 LAW 24a; 75 LAW 9	291
RESIDENCE 315 NORTHWEST BELL AVENUE 37 LAW 1, 2	292
RESIDENCE 316 NORTHWEST BELL AVENUE 52 LAW 25a, 26a	293
RESIDENCE 403 NORTHWEST BELL AVENUE 38 LAW 1,2	294
RESIDENCE 404 NORTHWEST BELL AVENUE 51 LAW 7, 8	295

RESIDENCE 405 NORTHWEST BELL AVENUE 38 LAW 3; 75 LAW 22	296
RESIDENCE 406 NORTHWEST BELL AVENUE 51 LAW 5, 6	297
RESIDENCE 407 NORTHWEST BELL AVENUE 38 LAW 4, 5	298
RESIDENCE 408 NORTHWEST BELL AVENUE 51 LAW 3, 4	299
RESIDENCE 409 NORTHWEST BELL AVENUE 38 LAW 6, 12	300
RESIDENCE 410 NORTHWEST BELL AVENUE 51 LAW 1, 2	301
RESIDENCE 411 NORTHWEST BELL AVENUE 38 LAW 7, 13	302
RESIDENCE 412 NORTHWEST BELL AVENUE 50 LAW 35, 36	303
RESIDENCE 413 NORTHWEST BELL AVENUE 38 LAW 8, 9	304
RESIDENCE 414 NORTHWEST BELL AVENUE 50 LAW 33; 75 LAW 21	305
RESIDENCE 415 NORTHWEST BELL AVENUE 38 LAW 10, 11	306
RESIDENCE 416 NORTHWEST BELL AVENUE 50 LAW 32, 34	307
RESIDENCE 501 NORTHWEST BELL AVENUE 39 LAW 24a; 40 LAW 0a	308
RESIDENCE 504 NORTHWEST BELL AVENUE 50 LAW 4, 5	309
RESIDENCE 506 NORTHWEST BELL AVENUE 50 LAW 2, 3	310
RESIDENCE 507 NORTHWEST BELL AVENUE	

74 LAW 29, 30	311
RESIDENCE 508 NORTHWEST BELL AVENUE 49 LAW 36a; 50 LAW 1	312
RESIDENCE 509 NORTHWEST BELL AVENUE 25 LAW 22, 23	313
RESIDENCE 510 NORTHWEST BELL AVENUE 49 LAW 35, 36	314
RESIDENCE 511 NORTHWEST BELL AVENUE 39 LAW 22; 69 LAW 3	315
RESIDENCE 512 NORTHWEST BELL AVENUE 75 LAW 23; 49 LAW 34	316
RESIDENCE 513 NORTHWEST BELL AVENUE 39 LAW 20, 21	317
RESIDENCE 514 NORTHWEST BELL AVENUE 49 LAW 33; 50 LAW 26	318
RESIDENCE 515 NORTHWEST BELL AVENUE 39 LAW 18, 19	319
RESIDENCE 516 NORTHWEST BELL AVENUE 49 LAW 31, 32	320
RESIDENCE 601 NORTHWEST BELL AVENUE 40 LAW 8a, 10a	321
RESIDENCE 602 NORTHWEST BELL AVENUE 49 LAW 18, 19	322
RESIDENCE 602-1/2 NORTHWEST BELL AVENUE 51 LAW 11, 12	323
RESIDENCE 604 NORTHWEST BELL AVENUE 49 LAW 16, 17	324
RESIDENCE 606 NORTHWEST BELL AVENUE 49 LAW 15, 30	325
RESIDENCE 607 NORTHWEST BELL AVENUE 40 LAW 7a, 15a	326

RESIDENCE 608 NORTHWEST BELL AVENUE 49 LAW 14, 25	327
RESIDENCE 610 NORTHWEST BELL AVENUE 49 LAW 11, 12	328
BARBER HOUSE 611 NORTHWEST BELL AVENUE 40 LAW 4a, 5a	329
RESIDENCE 612 NORTHWEST BELL AVENUE 49 LAW 9, 10	330
RESIDENCE 614 NORTHWEST BELL AVENUE 49 LAW 7, 8	331
RESIDENCE 615 NORTHWEST BELL AVENUE 40 LAW 2a, 3a	332
RESIDENCE 109 NORTHWEST SEVENTH STREET 49 LAW 5, 6	333
RESIDENCE 701 NORTHWEST BELL AVENUE 40 LAW 22a, 23a	334
RESIDENCE 702 NORTHWEST BELL AVENUE 47 LAW 33, 34	335
RESIDENCE 703 NORTHWEST BELL AVENUE 41 LAW 0, 1	336
RESIDENCE 704 NORTHWEST BELL AVENUE 47 LAW 31, 32	337
RESIDENCE 705 NORTHWEST BELL AVENUE 41 LAW 2, 15	338
RESIDENCE 706 NORTHWEST BELL AVENUE 47 LAW 29, 30	339
RESIDENCE 707 NORTHWEST BELL AVENUE 41 LAW 3, 4	340
RESIDENCE 708 NORTHWEST BELL AVENUE 47 LAW 27, 28	341
RESIDENCE 709 NORTHWEST BELL AVENUE	

41 LAW 5; 76 LAW 5	342
RESIDENCE 710 NORTHWEST BELL AVENUE 47 LAW 26; 69 LAW 8	343
RESIDENCE 711 NORTHWEST BELL AVENUE 41 LAW 6, 7	344
RESIDENCE 712 NORTHWEST BELL AVENUE 47 LAW 24; 69 LAW 9	345
RESIDENCE 713 NORTHWEST BELL AVENUE 41 LAW 8, 12	346
RESIDENCE 714 NORTHWEST BELL AVENUE 47 LAW 22, 23	347
RESIDENCE 715 NORTHWEST BELL AVENUE 41 LAW 10; 69 LAW 10	348
RESIDENCE 716 NORTHWEST BELL AVENUE 47 LAW 20, 21	349
RESIDENCE 801 NORTHWEST BELL AVENUE 42 LAW 30, 31	350
RESIDENCE 802 NORTHWEST BELL AVENUE 46 LAW 29a, 30a	351
RESIDENCE 803 NORTHWEST BELL AVENUE 42 LAW 28, 29	352
RESIDENCE 804 NORTHWEST BELL AVENUE 46 LAW 27a, 28a	353
RESIDENCE 805 NORTHWEST BELL AVENUE 42 LAW 26, 27	354
RESIDENCE 806 NORTHWEST BELL AVENUE 46 LAW 25a, 26a	355
RESIDENCE 807 NORTHWEST BELL AVENUE 42 LAW 24, 25	356
RESIDENCE 808 NORTHWEST BELL AVENUE 46 LAW 24a; 76 LAW 6	357

RESIDENCE 809 NORTHWEST BELL AVENUE 42 LAW 22, 23	358
RESIDENCE 810 NORTHWEST BELL AVENUE 46 LAW 22a, 23a	359
RESIDENCE 811 NORTHWEST BELL AVENUE 42 LAW 21, 36	360
RESIDENCE 812 NORTHWEST BELL AVENUE 46 LAW 20a, 21a	361
RESIDENCE 813 NORTHWEST BELL AVENUE 42 LAW 18, 36a	362
RESIDENCE 814 NORTHWEST BELL AVENUE 46 LAW 18a, 19a	363
RESIDENCE 815 NORTHWEST BELL AVENUE 42 LAW 16, 17	364
RESIDENCE 816 NORTHWEST BELL AVENUE 46 LAW 16a, 17a	365
RESIDENCE 901 NORTHWEST BELL AVENUE 44 LAW 2, 3	366
RESIDENCE 902 NORTHWEST BELL AVENUE 45 LAW 36a; 46 LAW 0a	367
RESIDENCE 903 NORTHWEST BELL AVENUE 44 LAW 1, 6	368
RESIDENCE 905 NORTHWEST BELL AVENUE 43 LAW 34, 36	369
RESIDENCE 907 NORTHWEST BELL AVENUE 43 LAW 33; 44 LAW 7	370
RESIDENCE 908 NORTHWEST BELL AVENUE 45 LAW 35, 36	371
RESIDENCE 909 NORTHWEST BELL AVENUE 43 LAW 32; 69 LAW 12	372
RESIDENCE 911 NORTHWEST BELL AVENUE	

44 LAW 8; 69 LAW 13	373
RESIDENCE 912 NORTHWEST BELL AVENUE 45 LAW 34; 46 LAW 13a	374
RESIDENCE 914 NORTHWEST BELL AVENUE 45 LAW 33; 76 LAW 8	375
RESIDENCE 916 NORTHWEST BELL AVENUE 45 LAW 31, 32	376
BABBITT HOUSE 1001 NORTHWEST BELL AVENUE 45 LAW 4, 5	377
RESIDENCE 1002 NORTHWEST BELL AVENUE 45 LAW 6, 7	378
RESIDENCE 1004 NORTHWEST BELL AVENUE 45 LAW 8, 11	379
RESIDENCE 1005 NORTHWEST BELL AVENUE 45 LAW 2, 3	380
RESIDENCE 1007 NORTHWEST BELL AVENUE 44 LAW 36a; 45 LAW 1	381
RESIDENCE 1010 NORTHWEST BELL AVENUE 45 LAW 9, 10	382
RESIDENCE 1012 NORTHWEST BELL AVENUE 45 LAW 13, 14	383
RESIDENCE 1016 NORTHWEST BELL AVENUE 45 LAW 15, 16	384
RESIDENCE 205 NORTHWEST COLUMBIA AVENUE 34 LAW 6a; 69 LAW 18	385
TOM DUNN AUTOMOTIVE 206 NORTHWEST COLUMBIA AVENUE 64 LAW 2a; 74 LAW 33	386
RESIDENCE 207 NORTHWEST COLUMBIA AVENUE 34 LAW 4a, 11a	387
RESIDENCE 208 NORTHWEST COLUMBIA AVENUE 34 LAW 19a, 20a	388

RESIDENCE 209 NORTHWEST COLUMBIA AVENUE 34 LAW 2a, 3a	389
RESIDENCE 210 NORTHWEST COLUMBIA AVENUE 34 LAW 17a, 18a	390
RESIDENCE 212 NORTHWEST COLUMBIA AVENUE 34 LAW 15a, 16a	391
RESIDENCE 213 NORTHWEST COLUMBIA AVENUE 34 LAW 0a, 1a	392
RESIDENCE 302 NORTHWEST COLUMBIA AVENUE 35 LAW 22, 23	393
RESIDENCE 304 NORTHWEST COLUMBIA AVENUE 35 LAW 24; 36 LAW 16	394
RESIDENCE 306 NORTHWEST COLUMBIA AVENUE 36 LAW 14; 69 LAW 20	395
RESIDENCE 308 NORTHWEST COLUMBIA AVENUE 36 LAW 1, 13	396
RESIDENCE 310 NORTHWEST COLUMBIA AVENUE 36 LAW 2, 3	397
RESIDENCE 312 NORTHWEST COLUMBIA AVENUE 36 LAW 4, 5	398
RESIDENCE 314 NORTHWEST COLUMBIA AVENUE 36 LAW 6, 8	399
RESIDENCE 316 NORTHWEST COLUMBIA AVENUE 36 LAW 7, 9	400
RESIDENCE 401 NORTHWEST COLUMBIA AVENUE 32 LAW 9a, 10a	401
RESIDENCE 403 NORTHWEST COLUMBIA AVENUE 32 LAW 8a; 74 LAW 36a	402
RESIDENCE 404 NORTHWEST COLUMBIA AVENUE 37 LAW 13, 14	403
RESIDENCE 405 NORTHWEST COLUMBIA AVENUE	

32 LAW 6a, 7a	404
RESIDENCE 406 NORTHWEST COLUMBIA AVENUE 37 LAW 15; 38 LAW 15	405
RESIDENCE 407 NORTHWEST COLUMBIA AVENUE 32 LAW 5a; 33 LAW 10	406
RESIDENCE 408 NORTHWEST COLUMBIA AVENUE 37 LAW 17; 69 LAW 22	407
RESIDENCE 409 NORTHWEST COLUMBIA AVENUE 32 LAW 4a; 33 LAW 9	408
RESIDENCE 410 NORTHWEST COLUMBIA AVENUE 37 LAW 19; 69 LAW 23	409
RESIDENCE 411 NORTHWEST COLUMBIA AVENUE 32 LAW 2a; 33 LAW 6	410
RESIDENCE 412 NORTHWEST COLUMBIA AVENUE 37 LAW 20, 21	411
RESIDENCE 414 NORTHWEST COLUMBIA AVENUE 37 LAW 22; 38 LAW 20	412
RESIDENCE 415 NORTHWEST COLUMBIA AVENUE 32 LAW 0a, 1a	413
RESIDENCE 416 NORTHWEST COLUMBIA AVENUE 37 LAW 23, 24	414
35TH INFANTRY DIVISION PARK 500 BLOCK NORTHWEST COLUMBIA AVENUE 81 LAW 32, 33	415
RESIDENCE 502 NORTHWEST COLUMBIA AVENUE 38 LAW 21, 22	416
RESIDENCE 504 NORTHWEST COLUMBIA AVENUE 38 LAW 24, 24a	417
RESIDENCE 506 NORTHWEST COLUMBIA AVENUE 39 LAW 2, 3	418
RESIDENCE 508 NORTHWEST COLUMBIA AVENUE 39 LAW 4, 5	419

RESIDENCE 510 NORTHWEST COLUMBIA AVENUE 39 LAW 6, 7	420
RESIDENCE 512 NORTHWEST COLUMBIA AVENUE 69 LAW 24; 70 LAW 1	421
MS. MARGARET'S HAPPY HOME DAY CARE 514 NORTHWEST COLUMBIA AVENUE 39 LAW 9, 10	422
RESIDENCE 516 NORTHWEST COLUMBIA AVENUE 39 LAW 11, 12	423
RESIDENCE 601 NORTHWEST COLUMBIA AVENUE 76 LAW 12, 13	424
RESIDENCE 602 NORTHWEST COLUMBIA AVENUE 40 LAW 13a, 14a	425
RESIDENCE 604 NORTHWEST COLUMBIA AVENUE 42 LAW 8, 11	426
RESIDENCE 605 NORTHWEST COLUMBIA AVENUE 75 LAW 12, 13	427
RESIDENCE 606 NORTHWEST COLUMBIA AVENUE 42 LAW 7, 12	428
RESIDENCE 607 NORTHWEST COLUMBIA AVENUE 82 LAW 16, 17	429
RESIDENCE 608 NORTHWEST COLUMBIA AVENUE 42 LAW 5, 13	430
RESIDENCE 609 NORTHWEST COLUMBIA AVENUE 76 LAW 16, 17	431
RESIDENCE 610 NORTHWEST COLUMBIA AVENUE 42 LAW 3, 14	432
RESIDENCE 611 NORTHWEST COLUMBIA AVENUE 76 LAW 18, 19	433
RESIDENCE 612 NORTHWEST COLUMBIA AVENUE 42 LAW 2, 15	434
RESIDENCE 613 NORTHWEST COLUMBIA AVENUE	

76 LAW 20, 21	435
RESIDENCE 614 NORTHWEST COLUMBIA AVENUE 41 LAW 35, 36	436
RESIDENCE 616 NORTHWEST COLUMBIA AVENUE 41 LAW 33, 34	437
RESIDENCE 701 NORTHWEST COLUMBIA AVENUE 31 LAW 24a; 76 LAW 11	438
RESIDENCE 702 NORTHWEST COLUMBIA AVENUE 70 LAW 2, 3	439
RESIDENCE 703 NORTHWEST COLUMBIA AVENUE 31 LAW 23, 24	440
RESIDENCE 704 NORTHWEST COLUMBIA AVENUE 70 LAW 4, 5	441
RESIDENCE 705 NORTHWEST COLUMBIA AVENUE 31 LAW 21, 22	442
RESIDENCE 706 NORTHWEST COLUMBIA AVENUE 41 LAW 24, 30	443
RESIDENCE 707 NORTHWEST COLUMBIA AVENUE 31 LAW 19, 20	444
RESIDENCE 708 NORTHWEST COLUMBIA AVENUE 41 LAW 22, 23	445
RESIDENCE 709 NORTHWEST COLUMBIA AVENUE 31 LAW 17, 18	446
RESIDENCE 710 NORTHWEST COLUMBIA AVENUE 41 LAW 21, 31	447
RESIDENCE 711 NORTHWEST COLUMBIA AVENUE 31 LAW 15, 16	448
RESIDENCE 712 NORTHWEST BELL AVENUE 41 LAW 20, 32	449
RESIDENCE 713 NORTHWEST COLUMBIA AVENUE 31 LAW 13, 14	450

RESIDENCE 714 NORTHWEST COLUMBIA AVENUE 41 LAW 19; 70 LAW 7	451
WASHINGTON SCHOOL 805 NORTHWEST COLUMBIA AVENUE 29 LAW 29, 49	452
RESIDENCE 806 NORTHWEST COLUMBIA AVENUE 43 LAW 13; 70 LAW 8	453
RESIDENCE 808 NORTHWEST COLUMBIA AVENUE 43 LAW 8, 16	454
RESIDENCE 810 NORTHWEST COLUMBIA AVENUE 43 LAW 6, 7	455
RESIDENCE 812 NORTHWEST COLUMBIA AVENUE 43 LAW 4, 5	456
RESIDENCE 814 NORTHWEST COLUMBIA AVENUE 43 LAW 3, 15	457
RESIDENCE 816 NORTHWEST COLUMBIA AVENUE 43 LAW 1, 2	458
RESIDENCE 901 NORTHWEST COLUMBIA AVENUE 28 LAW 20; 29 LAW 9a 11	459
LAWTON FULL GOSPEL KOREAN CHURCH 902 NORTHWEST COLUMBIA AVENUE 70 LAW 9, 10	460
RESIDENCE 903 NORTHWEST COLUMBIA AVENUE 28 LAW 18, 19	461
RESIDENCE 905 NORTHWEST COLUMBIA AVENUE 28 LAW 16, 22	462
RESIDENCE 907 NORTHWEST COLUMBIA AVENUE 28 LAW 14, 15	463
RESIDENCE 909 NORTHWEST COLUMBIA AVENUE 28 LAW 12, 13	464
RESIDENCE 911 NORTHWEST COLUMBIA AVENUE 28 LAW 10, 11	465
RESIDENCE 912 NORTHWEST COLUMBIA AVENUE	

43 LAW 19, 20	466
RESIDENCE 913 NORTHWEST COLUMBIA AVENUE 28 LAW 9, 24	467
RESIDENCE 914 NORTHWEST COLUMBIA AVENUE 43 LAW 21, 22	468
RESIDENCE 915 NORTHWEST COLUMBIA AVENUE 28 LAW 5, 6	469
RESIDENCE 916 NORTHWEST COLUMBIA AVENUE 43 LAW 23, 24	470
RESIDENCE 1001 NORTHWEST COLUMBIA AVENUE 27 LAW 15, 17	471
RESIDENCE 1002 NORTHWEST COLUMBIA AVENUE 44 LAW 11, 12	472
RESIDENCE 1002-1/2 NORTHWEST COLUMBIA AVENUE 44 LAW 9, 10	473
RESIDENCE 1004 NORTHWEST COLUMBIA AVENUE 44 LAW 13, 14	474
RESIDENCE 1005 NORTHWEST COLUMBIA AVENUE 27 LAW 14, 16	475
RESIDENCE 1006 NORTHWEST COLUMBIA AVENUE 44 LAW 15; 70 LAW 11	476
RESIDENCE 1007 NORTHWEST COLUMBIA AVENUE 27 LAW 18, 19	477
RESIDENCE 1008 NORTHWEST COLUMBIA AVENUE 44 LAW 16, 17	478
RESIDENCE 1010 NORTHWEST COLUMBIA AVENUE 44 LAW 19, 20	479
JOE FARLEY'S WAREHOUSE APPLIANCE SALES 201 NORTHWEST DEARBORN AVENUE 63 LAW 7, 8	480
RESIDENCE 210 NORTHWEST DEARBORN AVENUE 34 LAW 10a; 70 LAW 12	481

RESIDENCE 212 NORTHWEST DEARBORN AVENUE 33 LAW 22, 23	482
RESIDENCE 213 NORTHWEST DEARBORN AVENUE 15 LAW 6, 7	483
RESIDENCE 214 NORTHWEST DEARBORN AVENUE 33 LAW 20, 21	484
RESIDENCE 303 NORTHWEST DEARBORN AVENUE 15 LAW 4, 18	485
RESIDENCE 305 NORTHWEST DEARBORN AVENUE 15 LAW 2, 3	486
RESIDENCE 307 NORTHWEST DEARBORN AVENUE 15 LAW 19; 82 LAW 26	487
RESIDENCE 309 NORTHWEST DEARBORN AVENUE 15 LAW 20, 20	488
RESIDENCE 311 NORTHWEST DEARBORN AVENUE 14 LAW 23a; 70 LAW 15	489
RESIDENCE 313 NORTHWEST DEARBORN AVENUE 14 LAW 20a, 21a	490
RESIDENCE 401 NORTHWEST DEARBORN AVENUE 14 LAW 11a; 70 LAW 16	491
RESIDENCE 402 NORTHWEST DEARBORN AVENUE 32 LAW 12a, 13a	492
RESIDENCE 403 NORTHWEST DEARBORN AVENUE 14 LAW 9a, 10a	493
RESIDENCE 404 NORTHWEST DEARBORN AVENUE 32 LAW 14a, 15a	494
RESIDENCE 405 NORTHWEST DEARBORN AVENUE 14 LAW 7a, 8a	495
RESIDENCE 406 NORTHWEST DEARBORN AVENUE 32 LAW 16a, 17a	496
RESIDENCE 407 NORTHWEST DEARBORN AVENUE	

14 LAW 5a, 6a	497
RESIDENCE 408 NORTHWEST DEARBORN AVENUE 32 LAW 18a; 80 LAW 2	498
RESIDENCE 409 NORTHWEST DEARBORN AVENUE 14 LAW 4a; 70 LAW 20	499
RESIDENCE 410 NORTHWEST DEARBORN AVENUE 32 LAW 19a, 20a	500
RESIDENCE 411 NORTHWEST DEARBORN AVENUE 14 LAW 2a, 3a	501
RESIDENCE 412 NORTHWEST DEARBORN AVENUE 32 LAW 21a; 33 LAW 7	502
RESIDENCE 413 NORTHWEST DEARBORN AVENUE 14 LAW 0a, 1a	503
RESIDENCE 414 NORTHWEST DEARBORN AVENUE 32 LAW 22a, 23a	504
RESIDENCE 415 NORTHWEST DEARBORN AVENUE 13 LAW 23, 24	505
RESIDENCE 501 NORTHWEST DEARBORN AVENUE 23 LAW 2, 3	506
RESIDENCE 503 NORTHWEST DEARBORN AVENUE 23 LAW 17, 18	507
RESIDENCE 505 NORTHWEST DEARBORN AVENUE 23 LAW 5, 6	508
RESIDENCE 507 NORTHWEST DEARBORN AVENUE 23 LAW 7, 8	509
RESIDENCE 509 NORTHWEST DEARBORN AVENUE 23 LAW 9, 19	510
RESIDENCE 513 NORTHWEST DEARBORN AVENUE 23 LAW 10, 11	511
RESIDENCE 601 NORTHWEST DEARBORN AVENUE 20 LAW 23, 24	512

RESIDENCE 603 NORTHWEST DEARBORN AVENUE 23 LAW 20, 21	513
RESIDENCE 604 NORTHWEST DEARBORN AVENUE 80 LAW 9, 10	514
RESIDENCE 605 NORTHWEST DEARBORN AVENUE 23 LAW 22, 23	515
RESIDENCE 606 NORTHWEST DEARBORN AVENUE 80 LAW 11, 12	516
RESIDENCE 607 NORTHWEST DEARBORN AVENUE 23 LAW 24; 70 LAW 21	517
RESIDENCE 608 NORTHWEST DEARBORN AVENUE 80 LAW 13, 14	518
RESIDENCE 609 NORTHWEST DEARBORN AVENUE 24 LAW 1; 70 LAW 22	519
RESIDENCE 610 NORTHWEST DEARBORN AVENUE 80 LAW 15, 16	520
RESIDENCE 611 NORTHWEST DEARBORN AVENUE 24 LAW 2; 70 LAW 23	521
RESIDENCE 612 NORTHWEST DEARBORN AVENUE 80 LAW 17, 18	522
RESIDENCE 613 NORTHWEST DEARBORN AVENUE 24 LAW 3, 4	523
RESIDENCE 614 NORTHWEST DEARBORN AVENUE 80 LAW 19, 20	524
RESIDENCE 616 NORTHWEST DEARBORN AVENUE 80 LAW 21, 22	525
RESIDENCE 701 NORTHWEST DEARBORN AVENUE 24 LAW 13, 14	526
RESIDENCE 702 NORTHWEST DEARBORN AVENUE 30 LAW 20, 21	527
RESIDENCE 703 NORTHWEST DEARBORN AVENUE	

24 LAW 15; 80 LAW 24	528
RESIDENCE 704 NORTHWEST DEARBORN AVENUE 30 LAW 22, 23	529
RESIDENCE 706 NORTHWEST DEARBORN AVENUE 30 LAW 24, 25	530
RESIDENCE 707 NORTHWEST DEARBORN AVENUE 24 LAW 16, 18	531
RESIDENCE 708 NORTHWEST DEARBORN AVENUE 31 LAW 2; 71 LAW 1	532
RESIDENCE 709 NORTHWEST DEARBORN AVENUE 24 LAW 19; 71 LAW 3	533
RESIDENCE 710 NORTHWEST DEARBORN AVENUE 31 LAW 3, 4	534
RESIDENCE 711 NORTHWEST DEARBORN AVENUE 24 LAW 20, 24a	535
RESIDENCE 712 NORTHWEST DEARBORN AVENUE 31 LAW 5; 71 LAW 2	536
RESIDENCE 713 NORTHWEST DEARBORN AVENUE 24 LAW 21, 24	537
RESIDENCE 714 NORTHWEST DEARBORN AVENUE 31 LAW 6, 7	538
RESIDENCE 715 NORTHWEST DEARBORN AVENUE 24 LAW 22, 23	539
RESIDENCE 716 NORTHWEST DEARBORN AVENUE 31 LAW 8, 10	540
RESIDENCE 801 NORTHWEST DEARBORN AVENUE 22 LAW 23a, 24a	541
RESIDENCE 803 NORTHWEST DEARBORN AVENUE 25 LAW 11, 12	542
RESIDENCE 805 NORTHWEST DEARBORN AVENUE 25 LAW 10, 14	543

RESIDENCE 807 NORTHWEST DEARBORN AVENUE 25 LAW 9; 71 LAW 4	544
RESIDENCE 809 NORTHWEST DEARBORN AVENUE 25 LAW 7, 8	545
RESIDENCE 811 NORTHWEST DEARBORN AVENUE 25 LAW 5, 6	546
RESIDENCE 813 NORTHWEST DEARBORN AVENUE 25 LAW 3, 4	547
RESIDENCE 815 NORTHWEST DEARBORN AVENUE 25 LAW 2; 80 LAW 25	548
RESIDENCE 901 NORTHWEST DEARBORN AVENUE 30 LAW 1, 2	549
RESIDENCE 902 NORTHWEST DEARBORN AVENUE 29 LAW 5a, 6a	550
RESIDENCE 903 NORTHWEST DEARBORN AVENUE 30 LAW 3, 4	551
RESIDENCE 904 NORTHWEST DEARBORN AVENUE 29 LAW 7a, 8a	552
RESIDENCE 905 NORTHWEST DEARBORN AVENUE 30 LAW 5, 19	553
RESIDENCE 906 NORTHWEST DEARBORN AVENUE 29 LAW 9a, 23a	554
RESIDENCE 907 NORTHWEST DEARBORN AVENUE 30 LAW 6, 7	555
RESIDENCE 908 NORTHWEST DEARBORN AVENUE 29 LAW 10a, 22a	556
RESIDENCE 909 NORTHWEST DEARBORN AVENUE 30 LAW 8, 17	557
RESIDENCE 910 NORTHWEST DEARBORN AVENUE 29 LAW 11a, 12a	558
RESIDENCE 912 NORTHWEST DEARBORN AVENUE	

29 LAW 13a, 14a	559
RESIDENCE 913 NORTHWEST DEARBORN AVENUE 30 LAW 10, 11	560
RESIDENCE 914 NORTHWEST DEARBORN AVENUE 29 LAW 15a, 21a	561
RESIDENCE 915 NORTHWEST DEARBORN AVENUE 30 LAW 12, 13	562
RESIDENCE 916 NORTHWEST DEARBORN AVENUE 29 LAW 17a, 18a	563
RESIDENCE 1001 NORTHWEST DEARBORN AVENUE 27 LAW 4, 5	564
RESIDENCE 1002 NORTHWEST DEARBORN AVENUE 27 LAW 10, 11	565
RESIDENCE 1004 NORTHWEST DEARBORN AVENUE 27 LAW 9; 71 LAW 5	566
RESIDENCE 1005 NORTHWEST DEARBORN AVENUE 27 LAW 6, 7	567
RESIDENCE 1007 NORTHWEST DEARBORN AVENUE 26 LAW 19a; 71 LAW 6	568
RESIDENCE 1008 NORTHWEST DEARBORN AVENUE 27 LAW 8; 28 LAW 2	569
ART'S PLUMBING AND HEATING 208 NORTHWEST EUCLID AVENUE 63 LAW 1, 2	570
RESIDENCE 304 NORTHWEST EUCLID AVENUE 12 LAW 5; 72 LAW 19a	571
RESIDENCE 305 NORTHWEST EUCLID AVENUE 15 LAW 17; 72 LAW 20a	572
RESIDENCE 306 NORTHWEST EUCLID AVENUE 72 LAW 17a, 18a	573
RESIDENCE 307 NORTHWEST EUCLID AVENUE 11 LAW 22, 24a	574

RESIDENCE 308 NORTHWEST EUCLID AVENUE 12 LAW 8, 20	575
RESIDENCE 309 NORTHWEST EUCLID AVENUE 11 LAW 23; 72 LAW 21a	576
RESIDENCE 310 NORTHWEST EUCLID AVENUE 12 LAW 9; 72 LAW 16a	577
RESIDENCE 311 NORTHWEST EUCLID AVENUE 72 LAW 15a; 11 LAW 21	578
RESIDENCE 312 NORTHWEST EUCLID AVENUE 12 LAW 10, 11	579
RESIDENCE 314 NORTHWEST EUCLID AVENUE 12 LAW 12, 13	580
RESIDENCE 315 NORTHWEST EUCLID AVENUE 9 LAW 22, 23	581
RESIDENCE 316 NORTHWEST EUCLID AVENUE 72 LAW 12a, 13a	582
RESIDENCE 401 NORTHWEST EUCLID AVENUE 9 LAW 24a; 10 LAW 00	583
RESIDENCE 402 NORTHWEST EUCLID AVENUE 13 LAW 3, 4	584
RESIDENCE 403 NORTHWEST EUCLID AVENUE 10 LAW 2; 80 LAW 27	585
RESIDENCE 405 NORTHWEST EUCLID AVENUE 10 LAW 3; 72 LAW 11a	586
RESIDENCE 406 NORTHWEST EUCLID AVENUE 13 LAW 5; 72 LAW 10a	587
RESIDENCE 407 NORTHWEST EUCLID AVENUE 10 LAW 4, 5	588
RESIDENCE 408 NORTHWEST EUCLID AVENUE 13 LAW 8; 72 LAW 9a	589
RESIDENCE 409 NORTHWEST EUCLID AVENUE	

72 LAW 7a, 8a	590
RESIDENCE 410 NORTHWEST EUCLID AVENUE 13 LAW 9, 10	591
RESIDENCE 411 NORTHWEST EUCLID AVENUE 10 LAW 8, 9	592
RESIDENCE 412 NORTHWEST EUCLID AVENUE 13 LAW 12; 72 LAW 6a	593
RESIDENCE 413 NORTHWEST EUCLID AVENUE 10 LAW 10, 11	594
RESIDENCE 414 NORTHWEST EUCLID AVENUE 13 LAW 13, 14	595
RESIDENCE 416 NORTHWEST EUCLID AVENUE 13 LAW 15, 16	596
RESIDENCE 501 NORTHWEST EUCLID AVENUE 10 LAW 22; 72 LAW 5a	597
RESIDENCE 502 NORTHWEST EUCLID AVENUE 20 LAW 1, 2	598
RESIDENCE 503 NORTHWEST EUCLID AVENUE 10 LAW 24, 24a	599
RESIDENCE 504 NORTHWEST EUCLID AVENUE 20 LAW 5, 18	600
RESIDENCE 505 NORTHWEST EUCLID AVENUE 6 LAW 24a; 72 LAW 4a	601
RESIDENCE 506 NORTHWEST EUCLID AVENUE 20 LAW 7, 17	602
RESIDENCE 507 NORTHWEST EUCLID AVENUE 6 LAW 23, 24	603
RESIDENCE 508 NORTHWEST EUCLID AVENUE 20 LAW 6, 16	604
RESIDENCE 509 NORTHWEST EUCLID AVENUE 6 LAW 21, 22	605

RESIDENCE 510 NORTHWEST EUCLID AVENUE 20 LAW 8, 15	606
RESIDENCE 511 NORTHWEST EUCLID AVENUE 6 LAW 19, 20	607
RESIDENCE 512 NORTHWEST EUCLID AVENUE 20 LAW 9; 72 LAW 3a	608
RESIDENCE 513 NORTHWEST EUCLID AVENUE 6 LAW 17, 18	609
RESIDENCE 514 NORTHWEST EUCLID AVENUE 20 LAW 10; 72 LAW 2a	610
RESIDENCE 515 NORTHWEST EUCLID AVENUE 6 LAW 15, 16	611
RESIDENCE 516 NORTHWEST EUCLID AVENUE 20 LAW 11; 25 LAW 17	612
RESIDENCE 601 NORTHWEST EUCLID AVENUE 6 LAW 10, 11	613
RESIDENCE 602 NORTHWEST EUCLID AVENUE 20 LAW 24a; 83 LAW 11, 12	614
RESIDENCE 603 NORTHWEST EUCLID AVENUE 6 LAW 7, 8	615
RESIDENCE 605 NORTHWEST EUCLID AVENUE 6 LAW 5, 6	616
RESIDENCE 606 NORTHWEST EUCLID AVENUE 21 LAW 1, 15	617
RESIDENCE 607 NORTHWEST EUCLID AVENUE 6 LAW 3, 4	618
RESIDENCE 608 NORTHWEST EUCLID AVENUE 21 LAW 2, 14	619
RESIDENCE 609 NORTHWEST EUCLID AVENUE 6 LAW 1, 2	620
RESIDENCE 610 NORTHWEST EUCLID AVENUE	

21 LAW 3, 13	621
RESIDENCE 611 NORTHWEST EUCLID AVENUE 6 LAW 13, 14	622
RESIDENCE 612 NORTHWEST EUCLID AVENUE 21 LAW 4, 12	623
RESIDENCE 613 NORTHWEST EUCLID AVENUE 5 LAW 23, 24	624
RESIDENCE 614 NORTHWEST EUCLID AVENUE 21 LAW 5; 25 LAW 18	625
RESIDENCE 615 NORTHWEST EUCLID AVENUE 5 LAW 20, 21	626
RESIDENCE 616 NORTHWEST EUCLID AVENUE 21 LAW 6; 25 LAW 19	627
RESIDENCE 701 NORTHWEST EUCLID AVENUE 71 LAW 24a; 72 LAW 0a <i>OK</i>	628
RESIDENCE 702 NORTHWEST EUCLID AVENUE 21 LAW 17, 18	629
RESIDENCE 703 NORTHWEST EUCLID AVENUE 5 LAW 3, 4	630
RESIDENCE 704 NORTHWEST EUCLID AVENUE 21 LAW 19; 25 LAW 20	631
RESIDENCE 705 NORTHWEST EUCLID AVENUE 5 LAW 5, 6	632
RESIDENCE 706 NORTHWEST EUCLID AVENUE 21 LAW 20; 25 LAW 21	633
RESIDENCE 707 NORTHWEST EUCLID AVENUE 71 LAW 23, 24	634
RESIDENCE 708 NORTHWEST EUCLID AVENUE 21 LAW 21; 25 LAW 22	635
RESIDENCE 709 NORTHWEST EUCLID AVENUE 5 LAW 9, 10	636

RESIDENCE 710 NORTHWEST EUCLID AVENUE 21 LAW 22; 83 LAW 9	637
RESIDENCE 711 NORTHWEST EUCLID AVENUE 5 LAW 11; 71 LAW 22	638
RESIDENCE 712 NORTHWEST EUCLID AVENUE 21 LAW 24; 25 LAW 23	639
RESIDENCE 713 NORTHWEST EUCLID AVENUE 5 LAW 12, 13	640
RESIDENCE 714 NORTHWEST EUCLID AVENUE 22 LAW 17a, 18a	641
RESIDENCE 715 NORTHWEST EUCLID AVENUE 71 LAW 20, 21	642
RESIDENCE 716 NORTHWEST EUCLID AVENUE 22 LAW 15a, 16a	643
RESIDENCE 801 NORTHWEST EUCLID AVENUE 71 LAW 17, 18	644
RESIDENCE 802 NORTHWEST EUCLID AVENUE 22 LAW 12a, 13a	645
RESIDENCE 803 NORTHWEST EUCLID AVENUE 3 LAW 14, 15	646
RESIDENCE 804 NORTHWEST EUCLID AVENUE 22 LAW 10a, 11a	647
RESIDENCE 805 NORTHWEST EUCLID AVENUE 3 LAW 12, 13	648
RESIDENCE 807 NORTHWEST EUCLID AVENUE 3 LAW 10, 11	649
RESIDENCE 808 NORTHWEST EUCLID AVENUE 22 LAW 8a, 9a	650
RESIDENCE 809 NORTHWEST EUCLID AVENUE 3 LAW 8, 9	651
RESIDENCE 810 NORTHWEST EUCLID AVENUE	

22 LAW 6a, 7a	652
RESIDENCE 811 NORTHWEST EUCLID AVENUE 3 LAW 6, 7	653
RESIDENCE 812 NORTHWEST EUCLID AVENUE 22 LAW 4a, 5a	654
RESIDENCE 814 NORTHWEST EUCLID AVENUE 22 LAW 3a; 25 LAW 24	655
PARSONS HOUSE 815 NORTHWEST EUCLID AVENUE 3 LAW 5; 71 LAW 14	656
RESIDENCE 816 NORTHWEST EUCLID AVENUE 22 LAW 0a, 1a	657
RESIDENCE 901 NORTHWEST EUCLID AVENUE 2 LAW 14, 15	658
RESIDENCE 902 NORTHWEST EUCLID AVENUE 26 LAW 0a; 25 LAW 24a	659
RESIDENCE 903 NORTHWEST EUCLID AVENUE 2 LAW 12, 13	660
RESIDENCE 904 NORTHWEST EUCLID AVENUE 26 LAW 1a; 27 LAW 1	661
RESIDENCE 905 NORTHWEST EUCLID AVENUE 71 LAW 10, 11	662
RESIDENCE 906 NORTHWEST EUCLID AVENUE 26 LAW 2a; 27 LAW 0	663
RESIDENCE 907 NORTHWEST EUCLID AVENUE 2 LAW 8, 9	664
RESIDENCE 908 NORTHWEST EUCLID AVENUE 26 LAW 3a; 27 LAW 2	665
RESIDENCE 909 NORTHWEST EUCLID AVENUE 2 LAW 6, 7	666
RESIDENCE 910 NORTHWEST EUCLID AVENUE 26 LAW 4a; 27 LAW 3	667

RESIDENCE 911 NORTHWEST EUCLID AVENUE 2 LAW 4, 5	668
RESIDENCE 912 NORTHWEST EUCLID AVENUE 26 LAW 5a; 71 LAW 8	669
RESIDENCE 915 NORTHWEST EUCLID AVENUE 2 LAW 2, 3	670
MONTGOMERY HOUSE 916 NORTHWEST EUCLID AVENUE 26 LAW 6a, 7a	671
RESIDENCE 1001 NORTHWEST EUCLID AVENUE 1 LAW 4, 5	672
RESIDENCE 1002 NORTHWEST EUCLID AVENUE 26 LAW 8a, 9a	673
RESIDENCE 1005 NORTHWEST EUCLID AVENUE 1 LAW 6, 7	674
RESIDENCE 1006 NORTHWEST EUCLID AVENUE 26 LAW 10a, 22a	675
RESIDENCE 1007 NORTHWEST EUCLID AVENUE 1 LAW 8, 9	676
RESIDENCE 1008 NORTHWEST EUCLID AVENUE 26 LAW 11a; 71 LAW 7	677
RESIDENCE 1010 NORTHWEST EUCLID AVENUE 26 LAW 12a, 21a	678
ELMER THOMAS PARK 200-800 BLOCK NORTHWEST FERRIS AVENUE 80 LAW 29, 30	679
CAR CORNER 208 NORTHWEST FERRIS AVENUE 74 LAW 21, 22	680
RESIDENCE 210 NORTHWEST FERRIS AVENUE 74 LAW 23	681
INDIVIDUAL INTERIORS 216 NORTHWEST FERRIS AVENUE 15 LAW 14; 72 LAW 24a	682
PARK VIEW APARTMENTS 302 NORTHWEST FERRIS AVENUE	

9 LAW 14, 15, 16	683
RESIDENCE 308 NORTHWEST FERRIS AVENUE 9 LAW 13; 73 LAW 5	684
RESIDENCE 310 NORTHWEST FERRIS AVENUE 9 LAW 12; 73 LAW 0	685
RESIDENCE 312 NORTHWEST FERRIS AVENUE 9 LAW 10; 73 LAW 1	686
RESIDENCE 314 NORTHWEST FERRIS AVENUE 9 LAW 8, 20	687
RESIDENCE 316 NORTHWEST FERRIS AVENUE 73 LAW 3, 4	688
RESIDENCE 402 NORTHWEST FERRIS AVENUE 9 LAW 6; 11 LAW 20	689
SANDRA'S SEWING 404 NORTHWEST FERRIS AVENUE 73 LAW 8; 80 LAW 31	690
RESIDENCE 406 NORTHWEST FERRIS AVENUE 9 LAW 5; 11 LAW 19	691
RESIDENCE 408 NORTHWEST FERRIS AVENUE 9 LAW 4; 11 LAW 13	692
RESIDENCE 410 NORTHWEST FERRIS AVENUE 9 LAW 3; 73 LAW 7	693
RESIDENCE 412 NORTHWEST FERRIS AVENUE 9 LAW 2; 11 LAW 18	694
RESIDENCE 414 NORTHWEST FERRIS AVENUE 9 LAW 1; 11 LAW 17	695
RESIDENCE 504 NORTHWEST FERRIS AVENUE 7 LAW 17; 8 LAW 12	696
RESIDENCE 508 NORTHWEST FERRIS AVENUE 7 LAW 16; 80 LAW 32	697
RESIDENCE 510 NORTHWEST FERRIS AVENUE 7 LAW 15; 73 LAW 9	698

RESIDENCE 512 NORTHWEST FERRIS AVENUE 7 LAW 14, 18	699
RESIDENCE 516 NORTHWEST FERRIS AVENUE 7 LAW 13; 8 LAW 10	700
MUSEUM OF THE GREAT PLAINS 601 NORTHWEST FERRIS AVENUE 62 LAW 11a, 12a	701
RESIDENCE 608 NORTHWEST FERRIS AVENUE 7 LAW 11; 8 LAW 7	702
RESIDENCE 612 NORTHWEST FERRIS AVENUE 7 LAW 10; 8 LAW 6	703
RESIDENCE 614 NORTHWEST FERRIS AVENUE 7 LAW 9; 8 LAW 8	704
RESIDENCE 616 NORTHWEST FERRIS AVENUE 7 LAW 8; 73 LAW 12	705
PERCUSSIVE ARTS SOCIETY 701 NORTHWEST FERRIS AVENUE 62 LAW 14a, 15a	706
RESIDENCE 706 NORTHWEST FERRIS AVENUE 7 LAW 7; 73 LAW 13	707
RESIDENCE 708 NORTHWEST FERRIS AVENUE 7 LAW 6; 8 LAW 23	708
RESIDENCE 710 NORTHWEST FERRIS AVENUE 7 LAW 5; 8 LAW 22	709
RESIDENCE 712 NORTHWEST FERRIS AVENUE 7 LAW 4; 8 LAW 21	710
RESIDENCE 714 NORTHWEST FERRIS AVENUE 7 LAW 3; 8 LAW 2	711
RESIDENCE 716 NORTHWEST FERRIS AVENUE 7 LAW 1, 2	712
McMAHON MEMORIAL AUDITORIUM 801 NORTHWEST FERRIS AVENUE 62 LAW 11a, 12a	713
RESIDENCE 802 NORTHWEST FERRIS AVENUE	

4 LAW 11; 73 LAW 15	714
RESIDENCE 804 NORTHWEST FERRIS AVENUE 4 LAW 12, 13	715
RESIDENCE 806 NORTHWEST FERRIS AVENUE 4 LAW 14; 73 LAW 16	716
RESIDENCE 808 NORTHWEST FERRIS AVENUE 73 LAW 17; 80 LAW 33	717
RESIDENCE 810 NORTHWEST FERRIS AVENUE 4 LAW 18; 80 LAW 34	718
RESIDENCE 812 NORTHWEST FERRIS AVENUE 4 LAW 19; 73 LAW 18	719
RESIDENCE 814 NORTHWEST FERRIS AVENUE 4 LAW 20, 21	720
RESIDENCE 816 NORTHWEST FERRIS AVENUE 4 LAW 22, 23	721
RESIDENCE 904 NORTHWEST FERRIS AVENUE 73 LAW 22, 23	722
RESIDENCE 906 NORTHWEST FERRIS AVENUE 73 LAW 24; 2 LAW 24	723
RESIDENCE 908 NORTHWEST FERRIS AVENUE 4 LAW 2, 3	724
RESIDENCE 912 NORTHWEST FERRIS AVENUE 3 LAW 3; 81 LAW 1	725
RESIDENCE 916 NORTHWEST FERRIS AVENUE 80 LAW 35, 36	726
RESIDENCE 1002 NORTHWEST FERRIS AVENUE 1 LAW 19, 20	727
RESIDENCE 1006 NORTHWEST FERRIS AVENUE 1 LAW 18; 81 LAW 2	728
RESIDENCE 1008 NORTHWEST FERRIS AVENUE 1 LAW 15; 81 LAW 3, 4	729

LAWTON SENIOR HIGH SCHOOL NORTHWEST ELEVENTH STREET & NORTHWEST FERRIS AVE 62 LAW 7a, 8a	730
RESIDENCE 1 NORTHWEST FORT SILL BOULEVARD 60 LAW 4a, 5a	731
RESIDENCE 7 NORTHWEST FORT SILL BOULEVARD 60 LAW 2a, 3a	732
EXALL ENGLISH HOUSE 10 NORTHWEST FORT SILL BOULEVARD 60 LAW 14a, 15a	733
RESIDENCE 101 NORTHWEST FORT SILL BOULEVARD 45 LAW 19, 21	734
QUINETTE'S BED AND BREAKFAST HOUSE 102 NORTHWEST FORT SILL BOULEVARD 60 LAW 16a, 17a	735
RESIDENCE 105 NORTHWEST FORT SILL BOULEVARD 45 LAW 17, 18	736
RESIDENCE 110 NORTHWEST FORT SILL BOULEVARD 60 LAW 18a, 19a	737
RESIDENCE 112 NORTHWEST FORT SILL BOULEVARD 60 LAW 20a, 21a	738
RESIDENCE 201 NORTHWEST FORT SILL BOULEVARD 44 LAW 28, 30	739
RESIDENCE 202 NORTHWEST FORT SILL BOULEVARD 60 LAW 22a, 23a	740
RESIDENCE 203 NORTHWEST FORT SILL BOULEVARD 44 LAW 26, 27	741
RESIDENCE 205 NORTHWEST FORT SILL BOULEVARD 44 LAW 25, 33	742
RESIDENCE 207 NORTHWEST FORT SILL BOULEVARD 44 LAW 23, 25	743
RESIDENCE 208 NORTHWEST FORT SILL BOULEVARD 60 LAW 24a, 25a	744
RESIDENCE 209 NORTHWEST FORT SILL BOULEVARD	

44 LAW 21, 22	745
RESIDENCE 212 NORTHWEST FORT SILL BOULEVARD 60 LAW 26a, 27a	746
RESIDENCE 301 NORTHWEST FORT SILL BOULEVARD 27 LAW 20, 21	747
RESIDENCE 302 NORTHWEST FORT SILL BOULEVARD 60 LAW 29a, 30a	748
RESIDENCE 303 NORTHWEST FORT SILL BOULEVARD 27 LAW 22, 23	749
RESIDENCE 305 NORTHWEST FORT SILL BOULEVARD 27 LAW 24; 28 LAW 3	750
RESIDENCE 306 NORTHWEST FORT SILL BOULEVARD 60 LAW 31a	751
RESIDENCE 307 NORTHWEST FORT SILL BOULEVARD 28 LAW 1, 4	752
RESIDENCE 308 NORTHWEST FORT SILL BOULEVARD 60 LAW 32a, 33a	753
RESIDENCE 310 NORTHWEST FORT SILL BOULEVARD 60 LAW 34a, 35a	754
RESIDENCE 312 NORTHWEST FORT SILL BOULEVARD 60 LAW 36a; 61 LAW 1	755
RESIDENCE 401 NORTHWEST FORT SILL BOULEVARD 26 LAW 17a, 18a	756
RESIDENCE 402 NORTHWEST FORT SILL BOULEVARD 61 LAW 2, 3	757
RESIDENCE 403 NORTHWEST FORT SILL BOULEVARD 26 LAW 16a; 79 LAW 19	758
RESIDENCE 404 NORTHWEST FORT SILL BOULEVARD 61 LAW 4, 5	759
RESIDENCE 405 NORTHWEST FORT SILL BOULEVARD 26 LAW 15a, 20a	760

RESIDENCE 406 NORTHWEST FORT SILL BOULEVARD 61 LAW 6, 7	761
RESIDENCE 407 NORTHWEST FORT SILL BOULEVARD 26 LAW 13a; 81 LAW 10, 11	762
RESIDENCE 408 NORTHWEST FORT SILL BOULEVARD 61 LAW 8, 9	763
THE GINGER BREAD PLAYHOUSE AND PRESCHOOL 412 NORTHWEST FORT SILL BOULEVARD 61 LAW 11, 12	764
RESIDENCE 501 NORTHWEST FORT SILL BOULEVARD 81 LAW 6, 7	765
RESIDENCE 502 NORTHWEST FORT SILL BOULEVARD 61 LAW 13, 14	766
RESIDENCE 503 NORTHWEST FORT SILL BOULEVARD 1 LAW 12, 13	767
RESIDENCE 504 NORTHWEST FORT SILL BOULEVARD 61 LAW 15, 16	768
RESIDENCE 506 NORTHEAST FORT SILL BOULEVARD 61 LAW 17, 18	769
RESIDENCE 508 NORTHWEST FORT SILL BOULEVARD 61 LAW 19, 20	770
RESIDENCE 510 NORTHWEST FORT SILL BOULEVARD 61 LAW 21, 22	771
RESIDENCE 512 NORTHWEST FORT SILL BOULEVARD 61 LAW 23, 24	772
RESIDENCE 602 NORTHWEST FORT SILL BOULEVARD 61 LAW 24a; 62 LAW 0a <i>OK</i>	773
RESIDENCE 604 NORTHWEST FORT SILL BOULEVARD 62 LAW 1a, 2a	774
BRAUM'S ICE CREAM STORE 610 NORTHWEST FORT SILL BOULEVARD 62 LAW 3a, 4a	775
PAYLESS SHOESOURCE 702 NORTHWEST FORT SILL BOULEVARD	

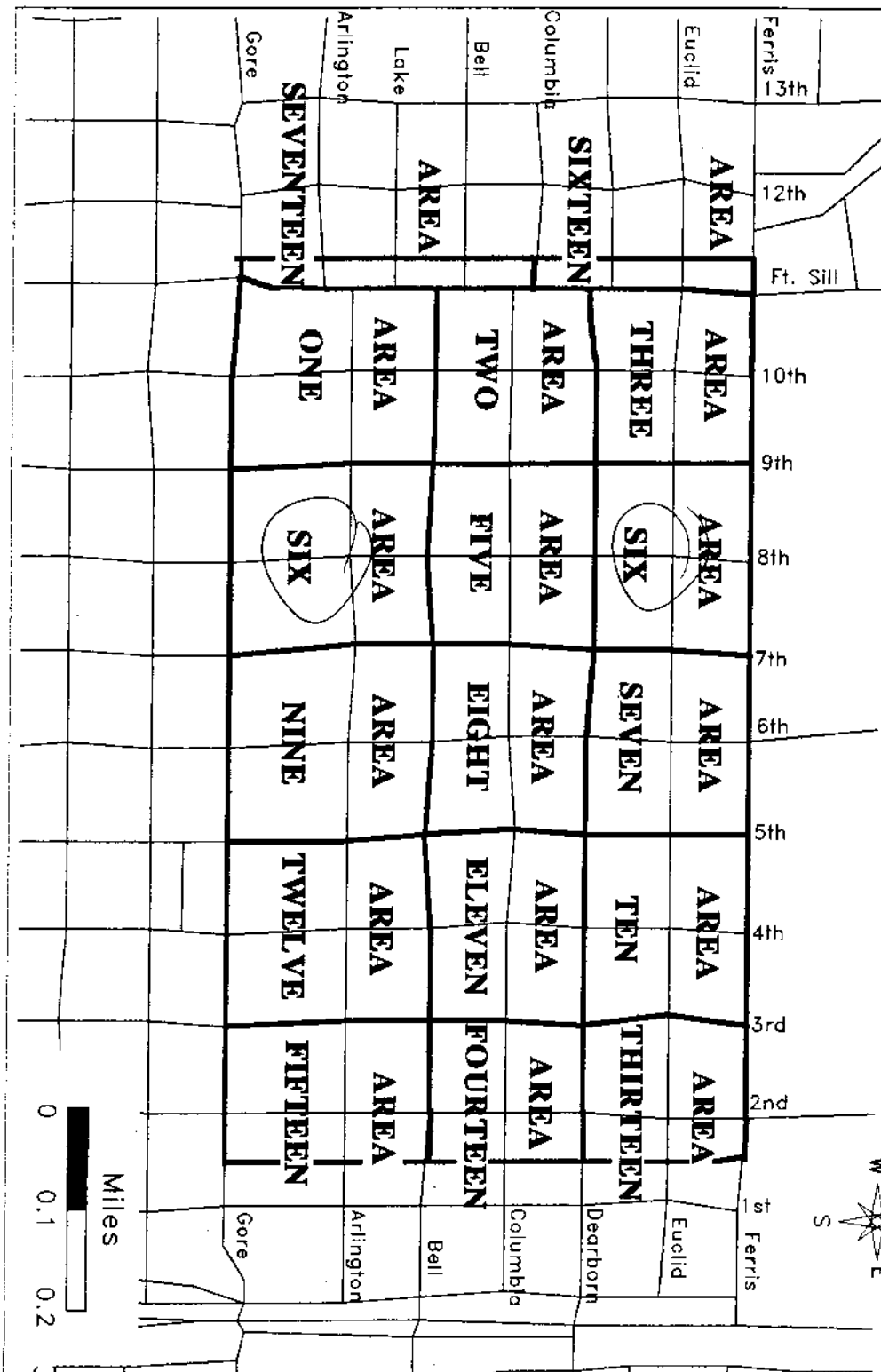
62 LAW 5a, 6a	776
DAN DELLUOMO NISSAN 201 WEST GORE BOULEVARD 64 LAW 23a, 24a	777
HOWARD SMITH TRUCK CENTER 206 WEST GORE BOULEVARD 66 LAW 19, 20	778
RESIDENCE 215 WEST GORE BOULEVARD 63 LAW 35, 36	779
HOWARD SMITH FORD 304 WEST GORE BOULEVARD 66 LAW 17, 18	780
RESIDENCE 305 WEST GORE BOULEVARD 54 LAW 30, 32	781
DEASY BUILDING 309 WEST GORE BOULEVARD 54 LAW 28, 29	782
RESIDENCE 311 WEST GORE BOULEVARD 54 LAW 26, 27	783
RESIDENCE 313 WEST GORE BOULEVARD 54 LAW 24, 25	784
AMERICAN RED CROSS, COMANCHE COUNTY OFFICE 401 WEST GORE BOULEVARD 55 LAW 20a, 21a	785
RESIDENCE 407 WEST GORE BOULEVARD 55 LAW 18a, 19a	786
HELEN HOLLIDAY HOME (EAST BUILDING) 411 WEST GORE BOULEVARD 55 LAW 15a, 16a	787
HELEN HOLLIDAY HOME (WEST BUILDING) 413 WEST GORE BOULEVARD 55 LAW 13a, 14a	788
RESIDENCE 415 WEST GORE BOULEVARD 55 LAW 11a, 12a	789
FIELDS HOUSE 501 WEST GORE BOULEVARD 56 LAW 3, 4	790
THOMAS HOUSE 505 WEST GORE BOULEVARD 56 LAW 5, 6	791

L. J. MYERS, DDS, FAMILY DENTISTRY 509 WEST GORE BOULEVARD 56 LAW 7, 9	792
RESIDENCE 513 WEST GORE BOULEVARD 56 LAW 10, 11	793
ATKINSON PROFESSIONAL BUILDING 605 WEST GORE BOULEVARD 56 LAW 35, 36	794
SISTERS OF DIVINE PROVIDENCE CONVENT 606 WEST GORE BOULEVARD 66 LAW 14, 15	795
ST. MARY ACADEMY 600 BLOCK OF WEST GORE BOULEVARD 79 LAW 26, 27	796
RESIDENCE 611 WEST GORE BOULEVARD 56 LAW 33, 34	797
RESIDENCE 613 WEST GORE BOULEVARD 56 LAW 31, 32	798
RESIDENCE 615 WEST GORE BOULEVARD 56 LAW 29, 30	799
SHEAR SUCCESS & THE HEAVENLY DIRECTION 702-704 WEST GORE BOULEVARD 66 LAW 8, 9	800
RESIDENCE 703 WEST GORE BOULEVARD 57 LAW 27, 28	801
RESIDENCE 705 WEST GORE BOULEVARD 57 LAW 26, 33	802
RESIDENCE 707 WEST GORE BOULEVARD 57 LAW 24, 25	803
MILLER MANOR RECOVERY HOME 708 WEST GORE BOULEVARD 66 LAW 6, 7	804
STORY & BARTON SCHOOL OF THE DANCE 709 WEST GORE BOULEVARD 57 LAW 22, 23	805
RESIDENCE 710 WEST GORE BOULEVARD 66 LAW 4, 5	806
RESIDENCE 711 WEST GORE BOULEVARD	

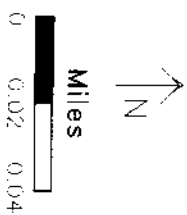
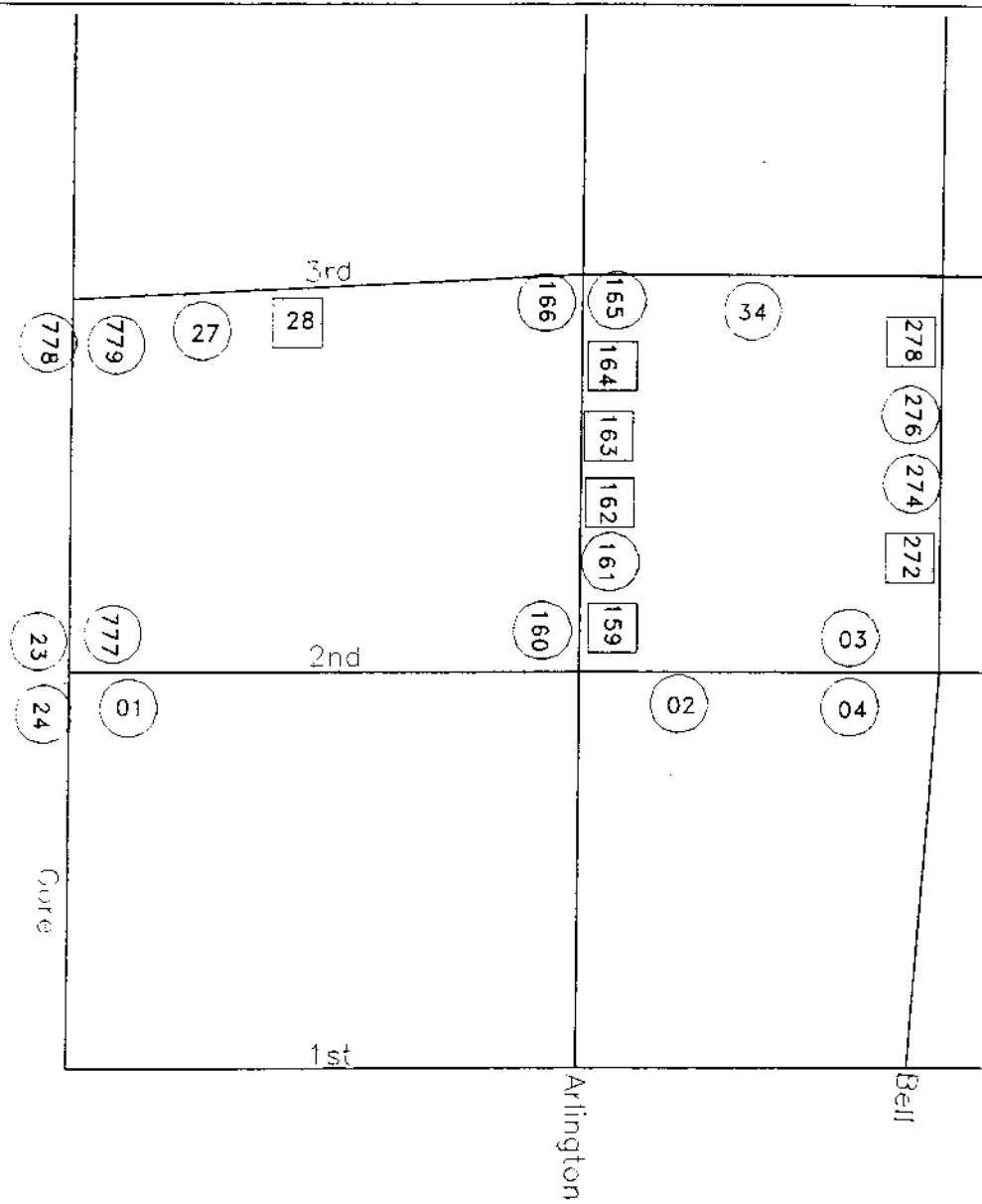
57 LAW 20, 21	807
RESIDENCE 713 WEST GORE BOULEVARD 57 LAW 18, 19	808
CAMPFIRE BUILDING 714 WEST GORE BOULEVARD 66 LAW 2, 3	809
RESIDENCE 715 WEST GORE BOULEVARD 57 LAW 16, 17	810
SMITH & SONS INSURANCE AGENCY, INC. 716 WEST GORE BOULEVARD 65 LAW 24a; 66 LAW 1	811
RESIDENCE 801 WEST GORE BOULEVARD 58 LAW 24, 25	812
RESIDENCE 804 WEST GORE BOULEVARD 65 LAW 22a, 23a	813
DR. JOHN ZITON, OPTOMETRIST 806 WEST GORE BOULEVARD 65 LAW 20a, 21a	814
ROSS HOUSE 807 WEST GORE BOULEVARD 58 LAW 22, 23	815
FOX CENTRAL OFFICE PLAZA 808-816 WEST GORE BOULEVARD 65 LAW 18a, 19a	816
RESIDENCE 813 WEST GORE BOULEVARD 58 LAW 21, 27	817
RESIDENCE 815 WEST GORE BOULEVARD 58 LAW 19, 20	818
RESIDENCE 901 WEST GORE BOULEVARD 59 LAW 24, 25	819
HERB'S SUPER-MARKET 902 WEST GORE BOULEVARD 65 LAW 14a, 15a	820
RESIDENCE 903 WEST GORE BOULEVARD 59 LAW 23; 83 LAW 16	821
RESIDENCE 905 WEST GORE BOULEVARD 59 LAW 21, 22	822

RESIDENCE 907 WEST GORE BOULEVARD 59 LAW 19, 20	823
RESIDENCE 909 WEST GORE BOULEVARD 59 LAW 17, 18	824
STAR SHOTS AND CLOVER PRINTING & GRAPHICS 910 WEST GORE BOULEVARD 65 LAW 12a, 13a	825
RESIDENCE 911 WEST GORE BOULEVARD 59 LAW 15, 16	826
RESIDENCE 912 WEST GORE BOULEVARD 65 LAW 10a, 11a	827
RESIDENCE 913 WEST GORE BOULEVARD 59 LAW 13, 14	828
RESIDENCE 915 WEST GORE BOULEVARD 59 LAW 11, 12	829
COMANCHE COUNTY FEDERAL CREDIT UNION 916 WEST GORE BOULEVARD 65 LAW 8a, 9a	830
RESIDENCE 1001 WEST GORE BOULEVARD 60 LAW 10a, 11a	831
AYCOCK BUILDING 1002 WEST GORE BOULEVARD 65 LAW 6a, 7a	832
RESIDENCE 1005 WEST GORE BOULEVARD 60 LAW 8a, 9a	833
TRAVEL NETWORK, SMOKE FREE CLEANERS 1006-1010 WEST GORE BOULEVARD 65 LAW 4a, 5a	834
RESIDENCE 1007 NORTHWEST GORE BOULEVARD 60 LAW 6a, 7a	835

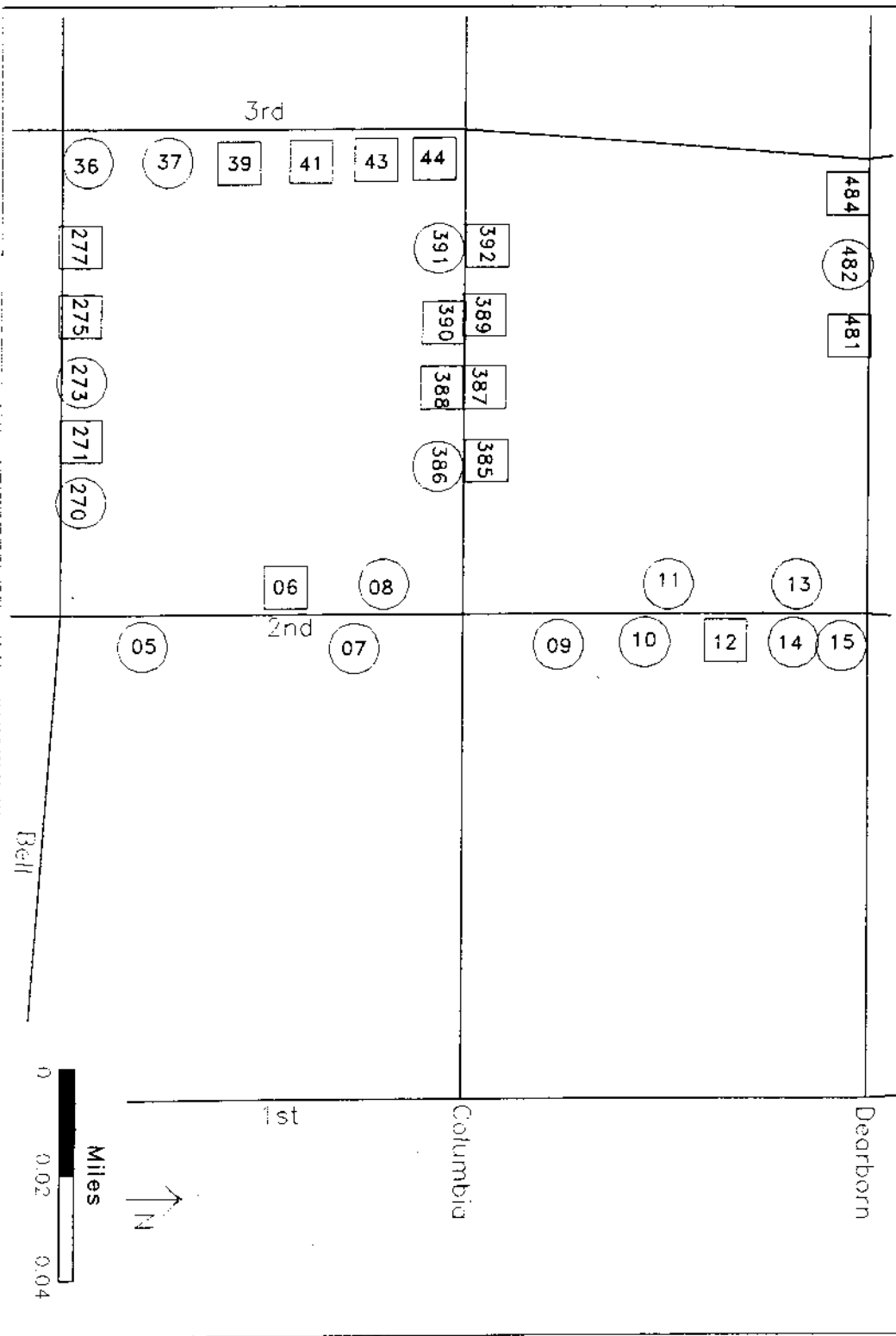
OLD TOWN NORTH HISTORIC DISTRICT BASE MAP



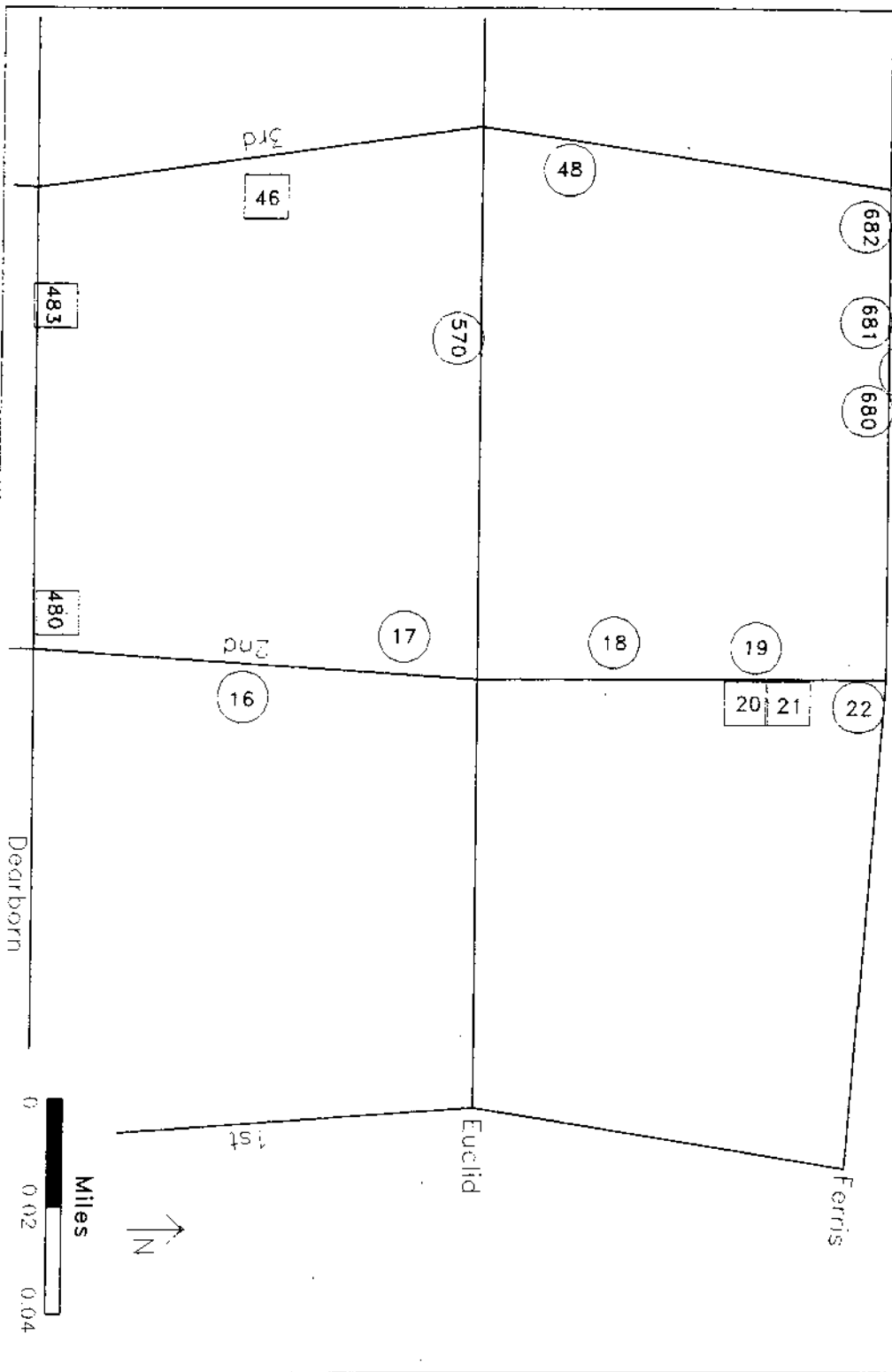
OLD TOWN NORTH HISTORIC DISTRICT **AREA ONE: COORDINATE LOCATIONS**



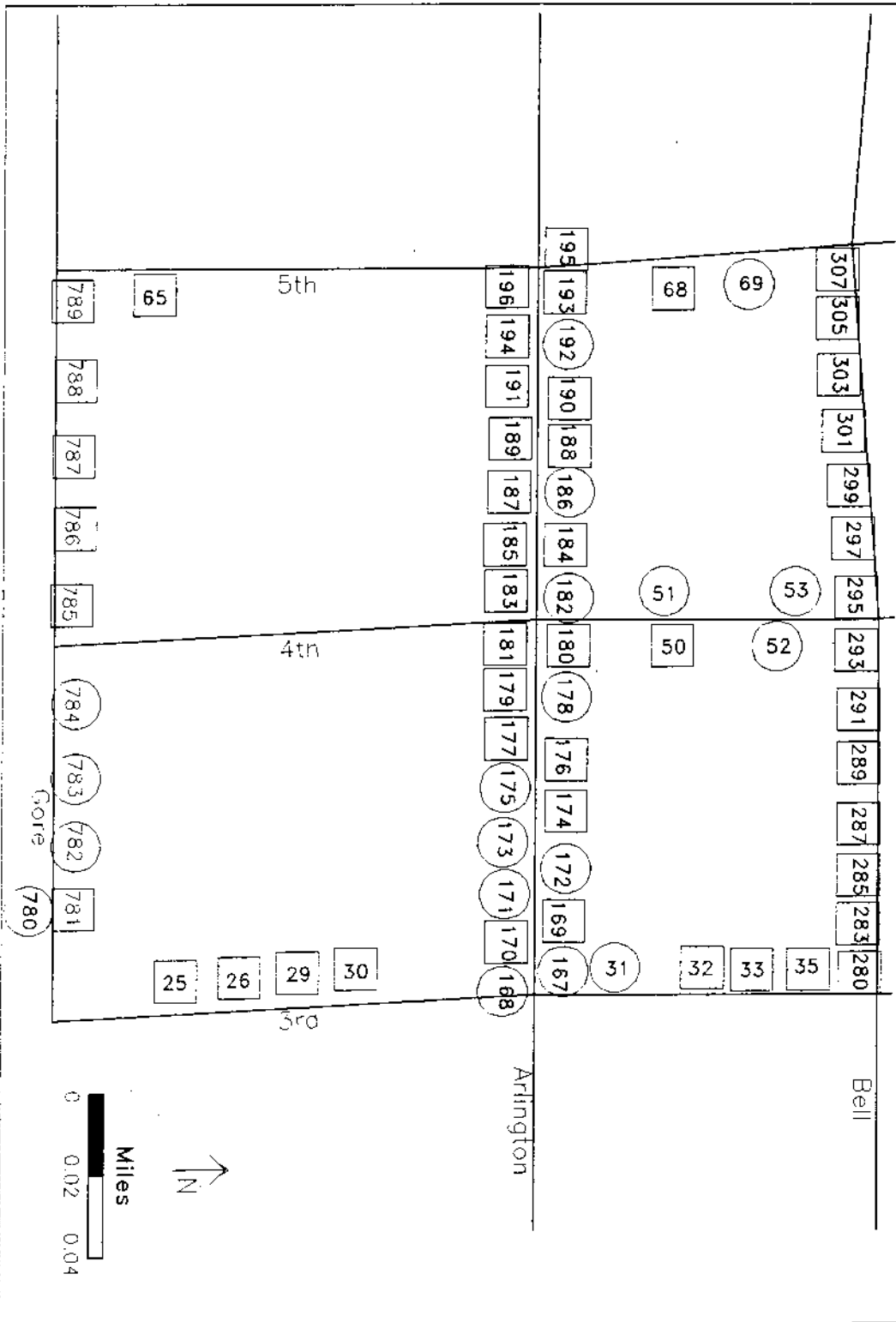
OLD TOWN NORTH HISTORIC DISTRICT AREA TWO: COORDINATE LOCATIONS



OLD TOWN NORTH HISTORIC DISTRICT AREA THREE: COORDINATE LOCATIONS



OLD TOWN NORTH HISTORIC DISTRICT AREA FOUR: COORDINATE LOCATIONS



OLD TOWN NORTH HISTORIC DISTRICT **AREA FIVE: COORDINATE LOCATIONS**

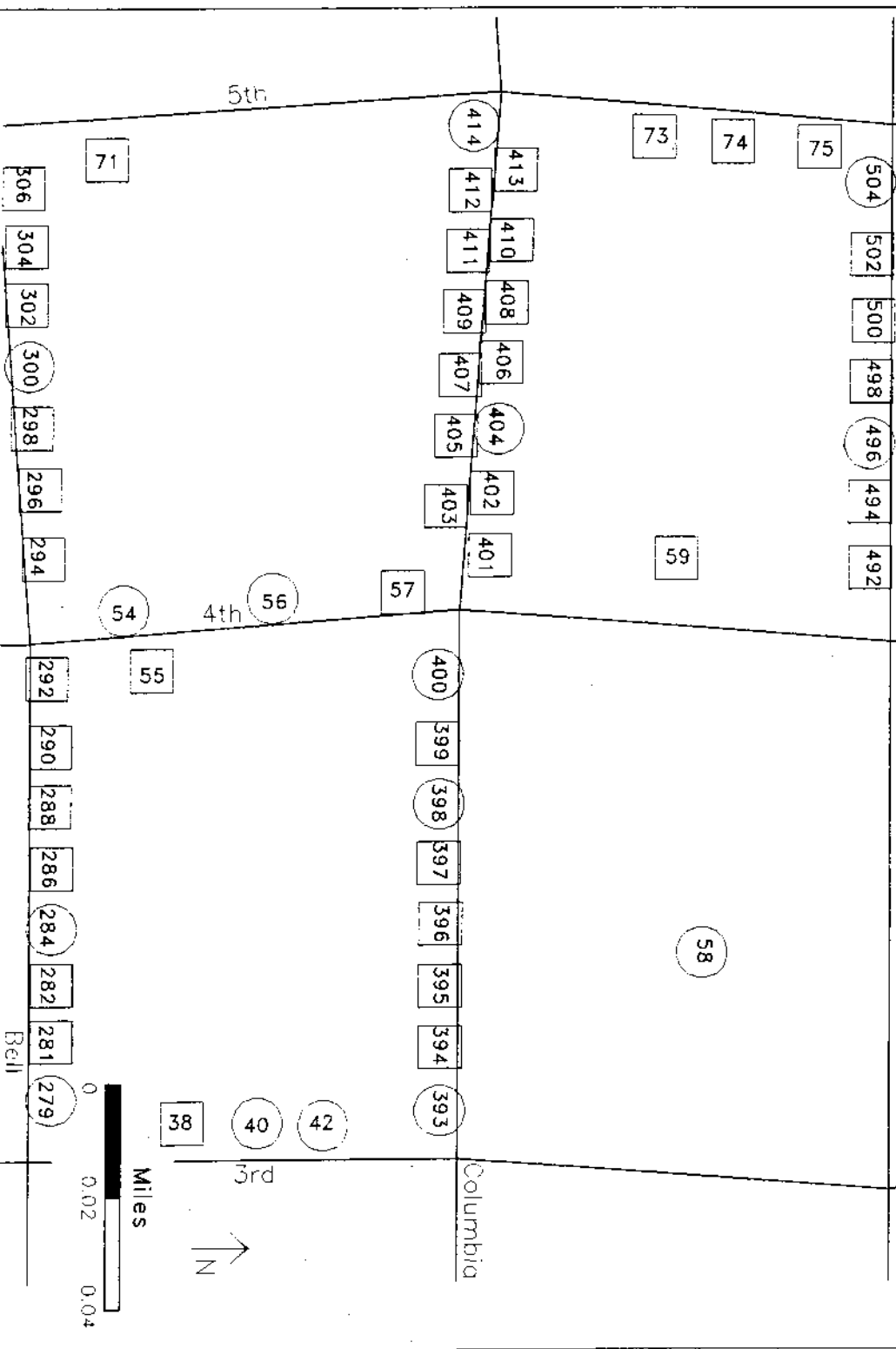
Dearborn

Columbia

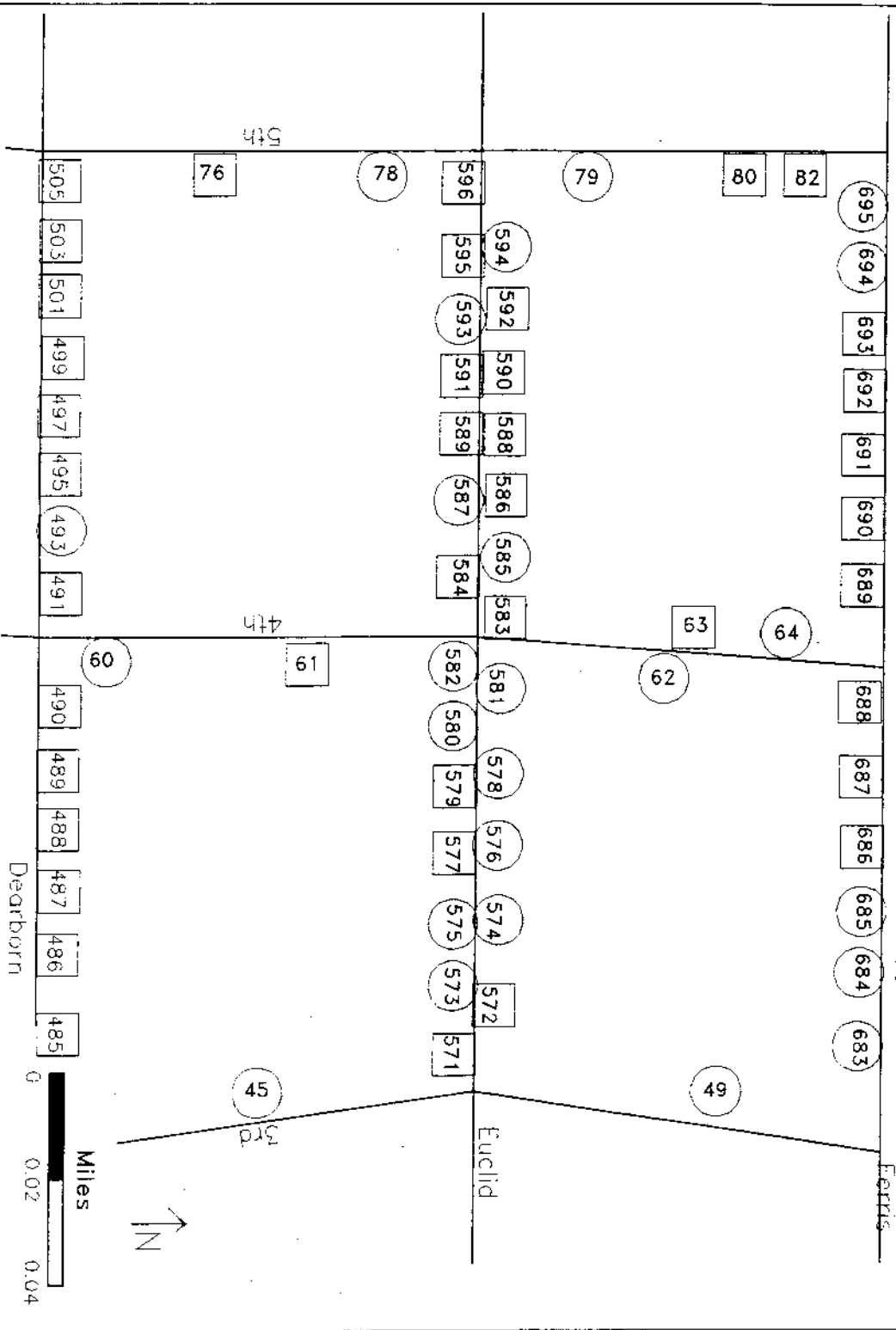
5th

4th

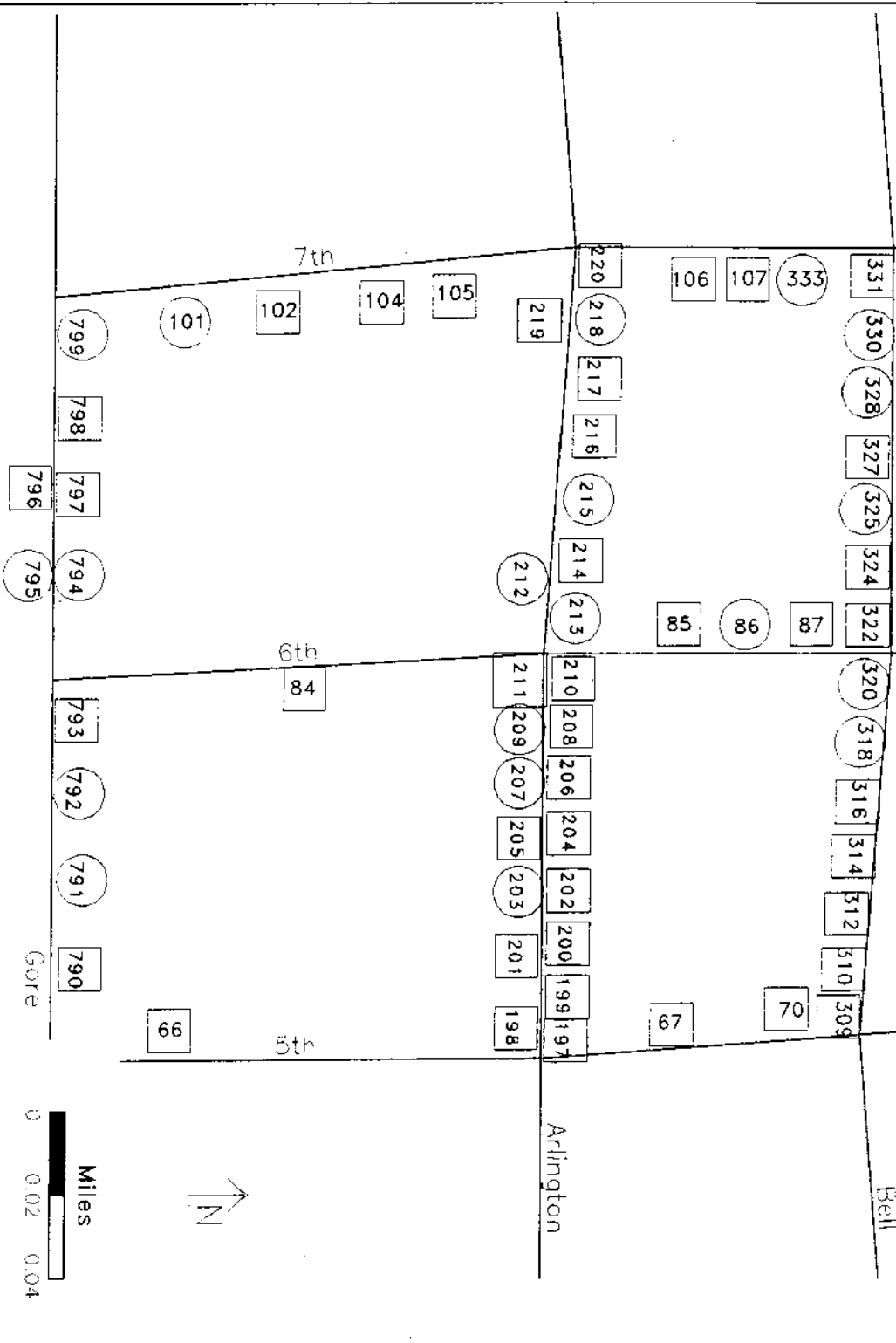
3rd



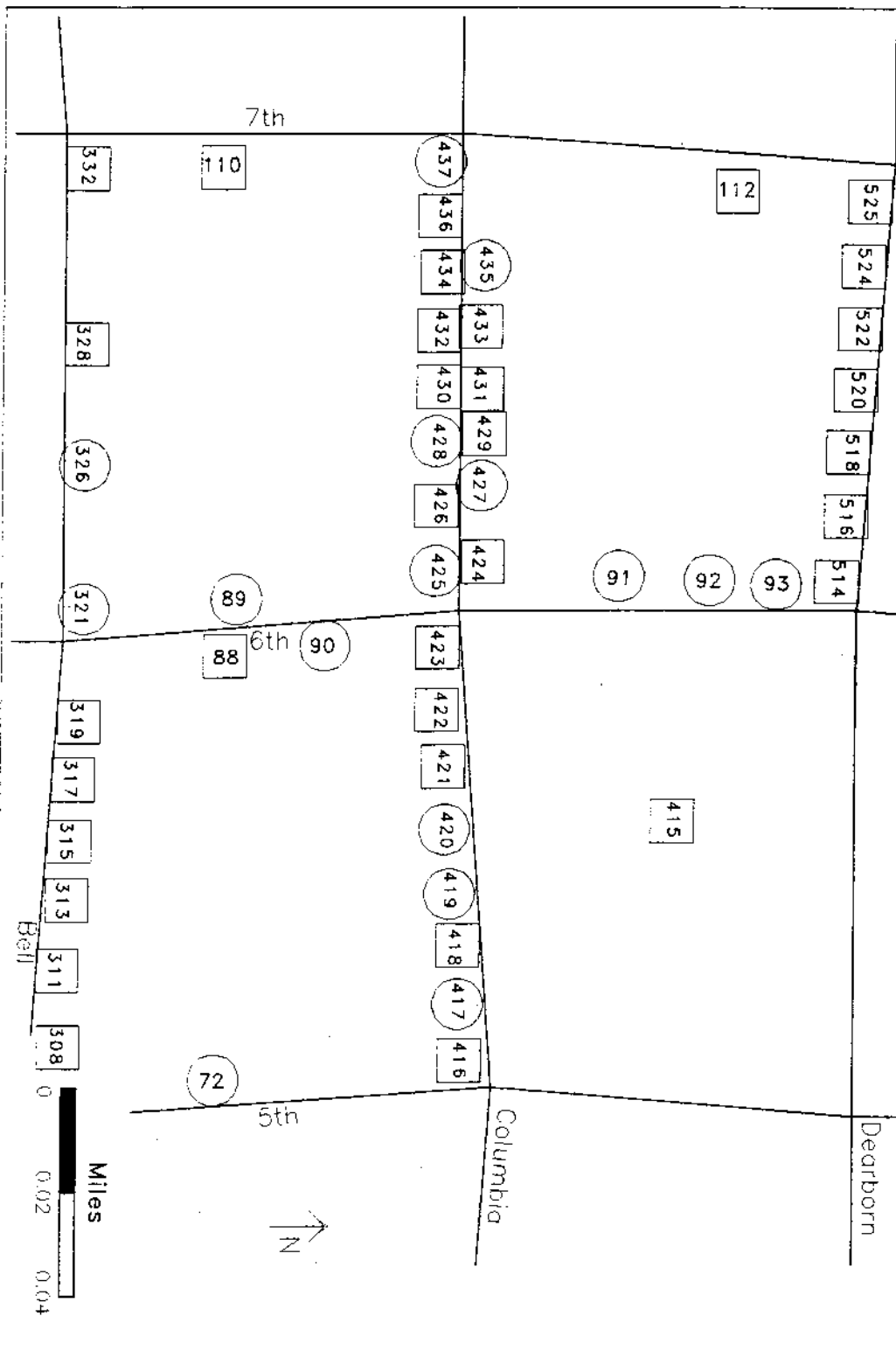
OLD TOWN NORTH HISTORIC DISTRICT AREA SIX: COORDINATE LOCATIONS



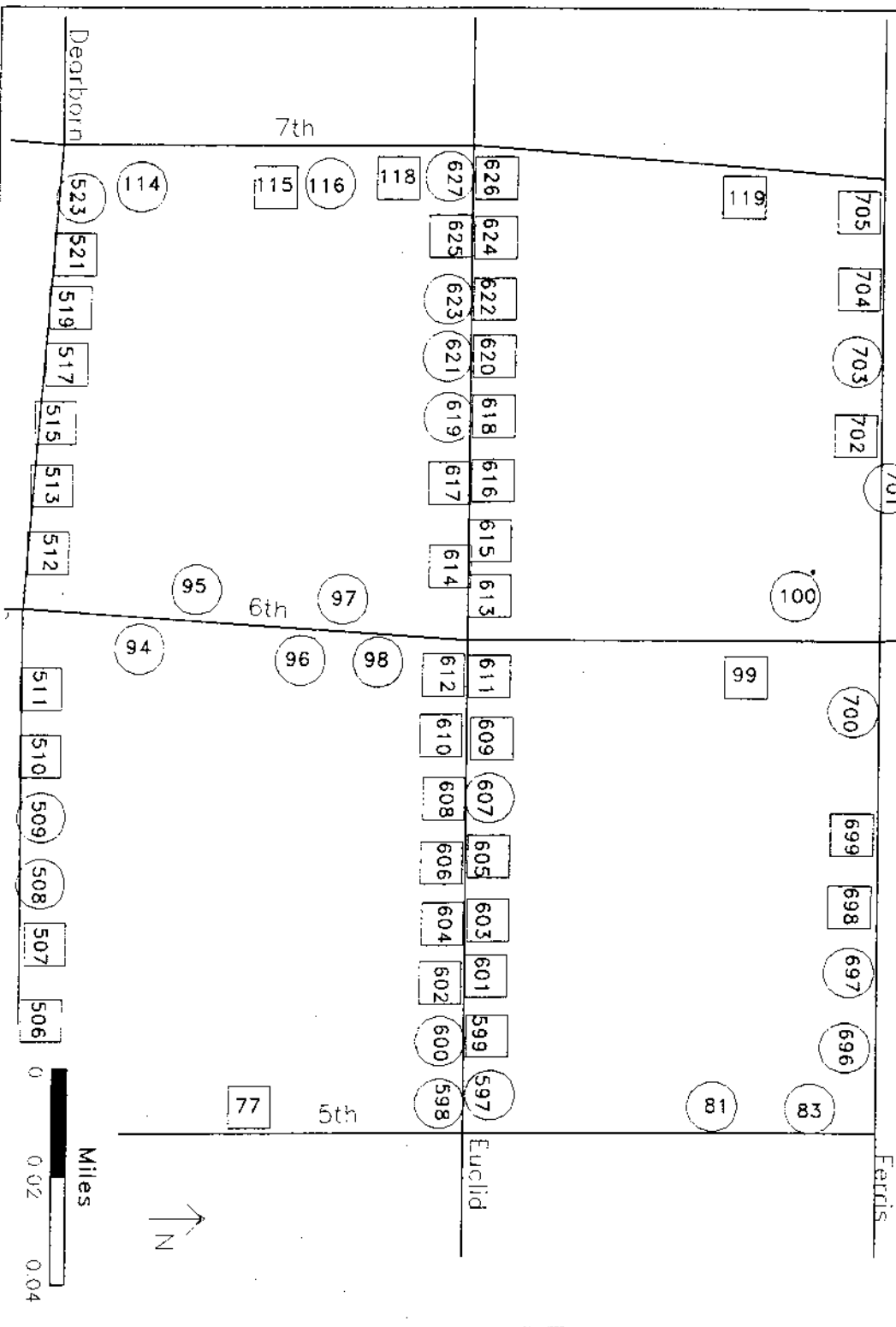
OLD TOWN NORTH HISTORIC DISTRICT AREA SEVEN: COORDINATE LOCATIONS



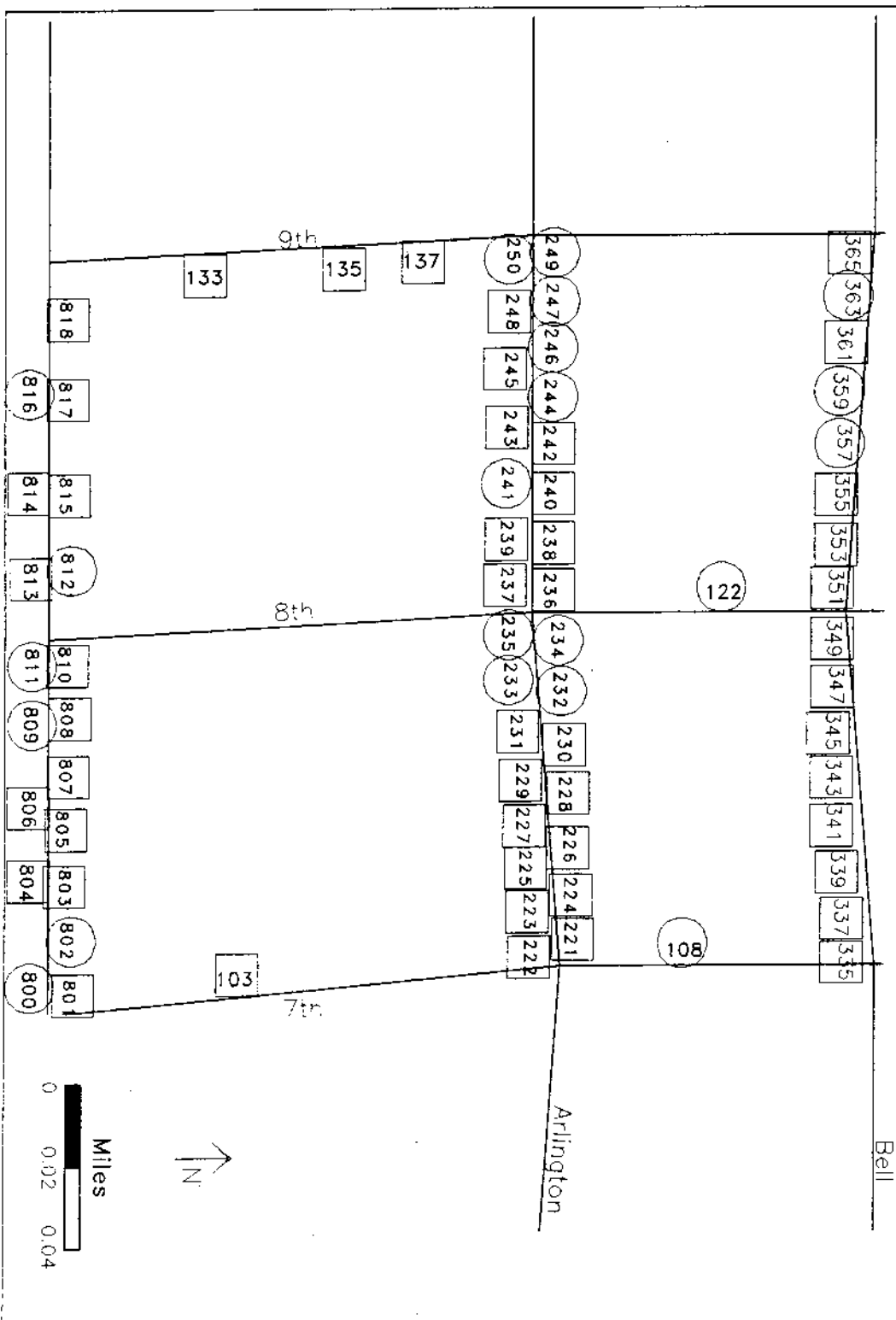
OLD TOWN NORTH HISTORIC DISTRICT AREA EIGHT: COORDINATE LOCATIONS



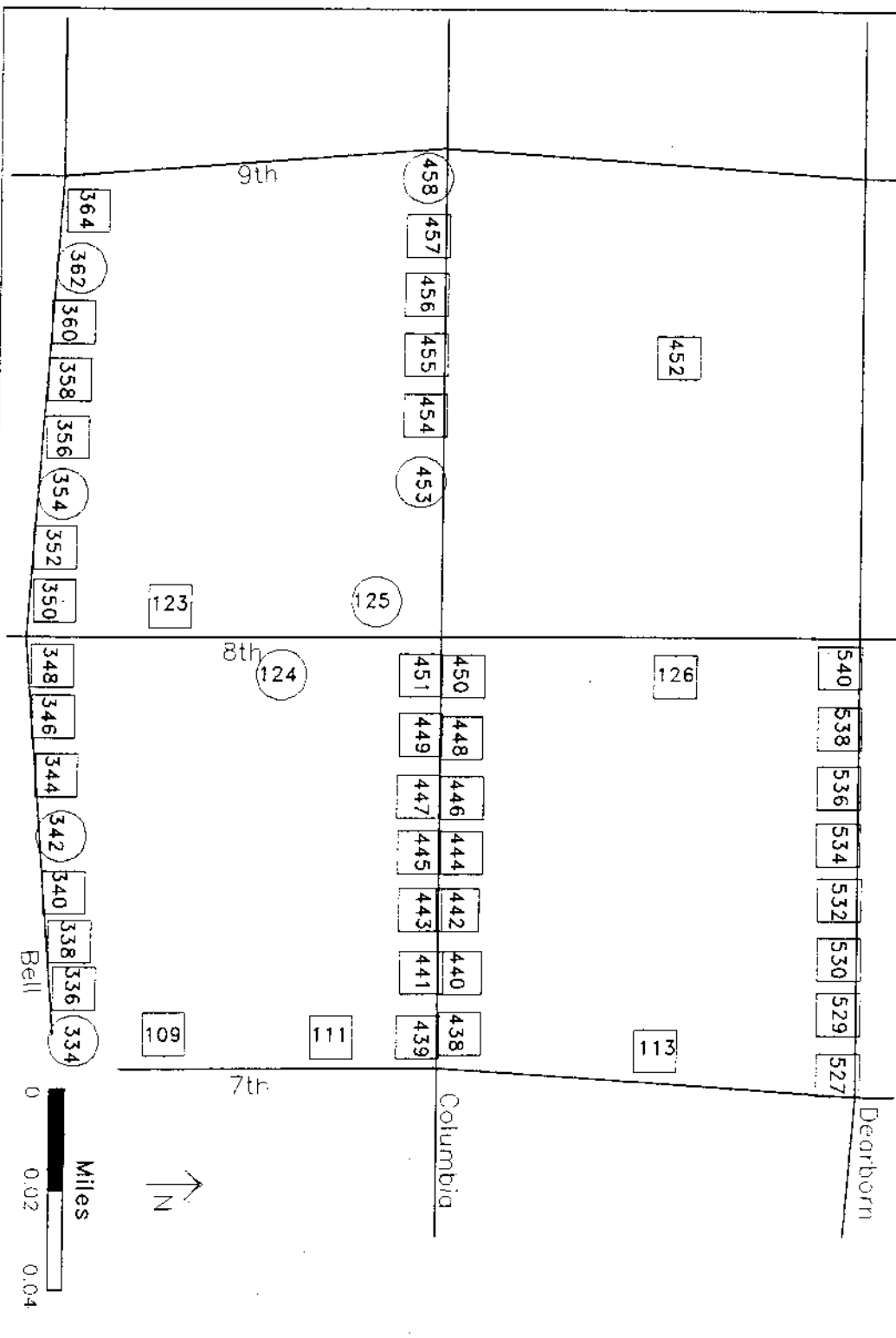
OLD TOWN NORTH HISTORIC DISTRICT AREA NINE: COORDINATE LOCATIONS



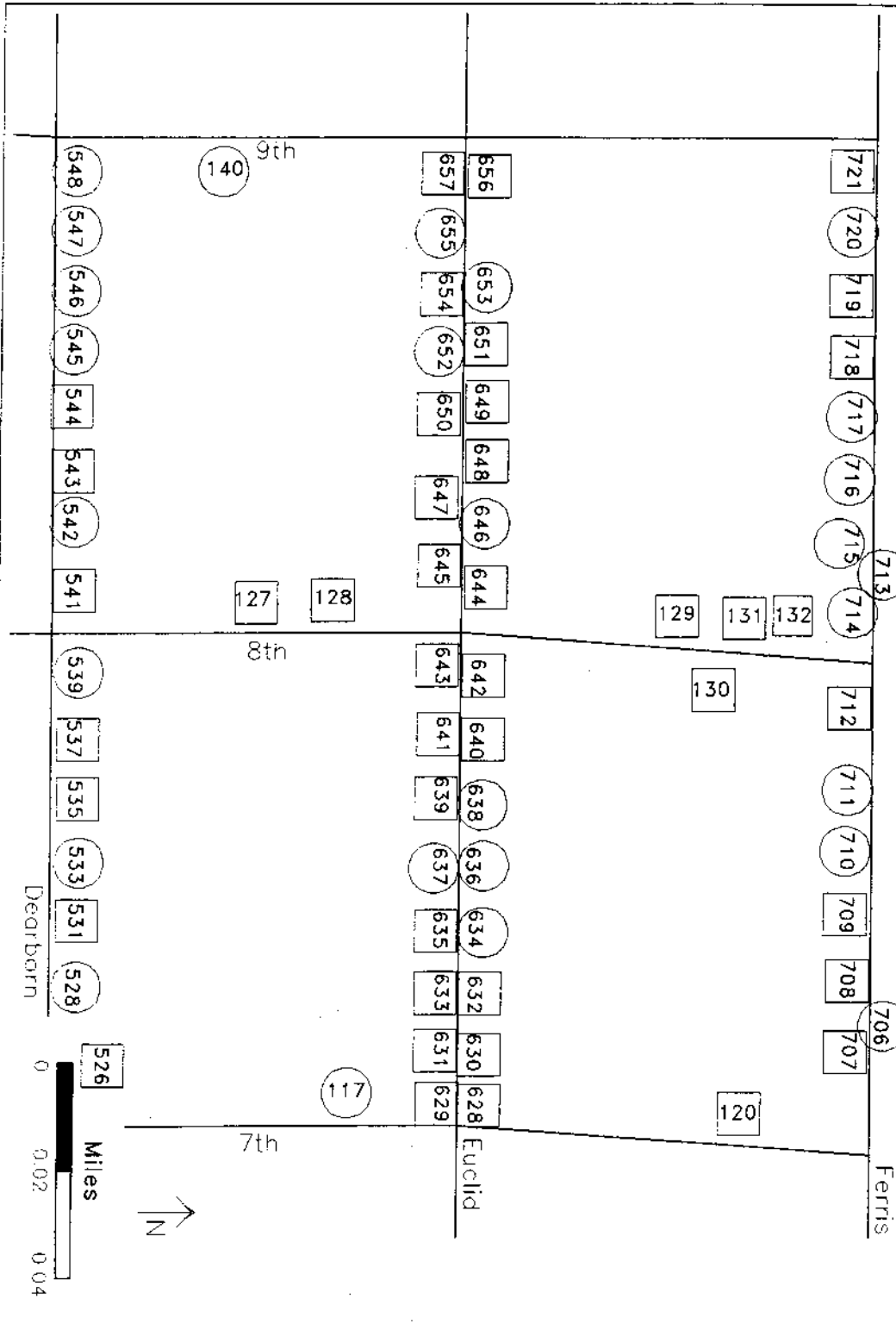
OLD TOWN NORTH HISTORIC DISTRICT AREA TEN: COORDINATE LOCATIONS



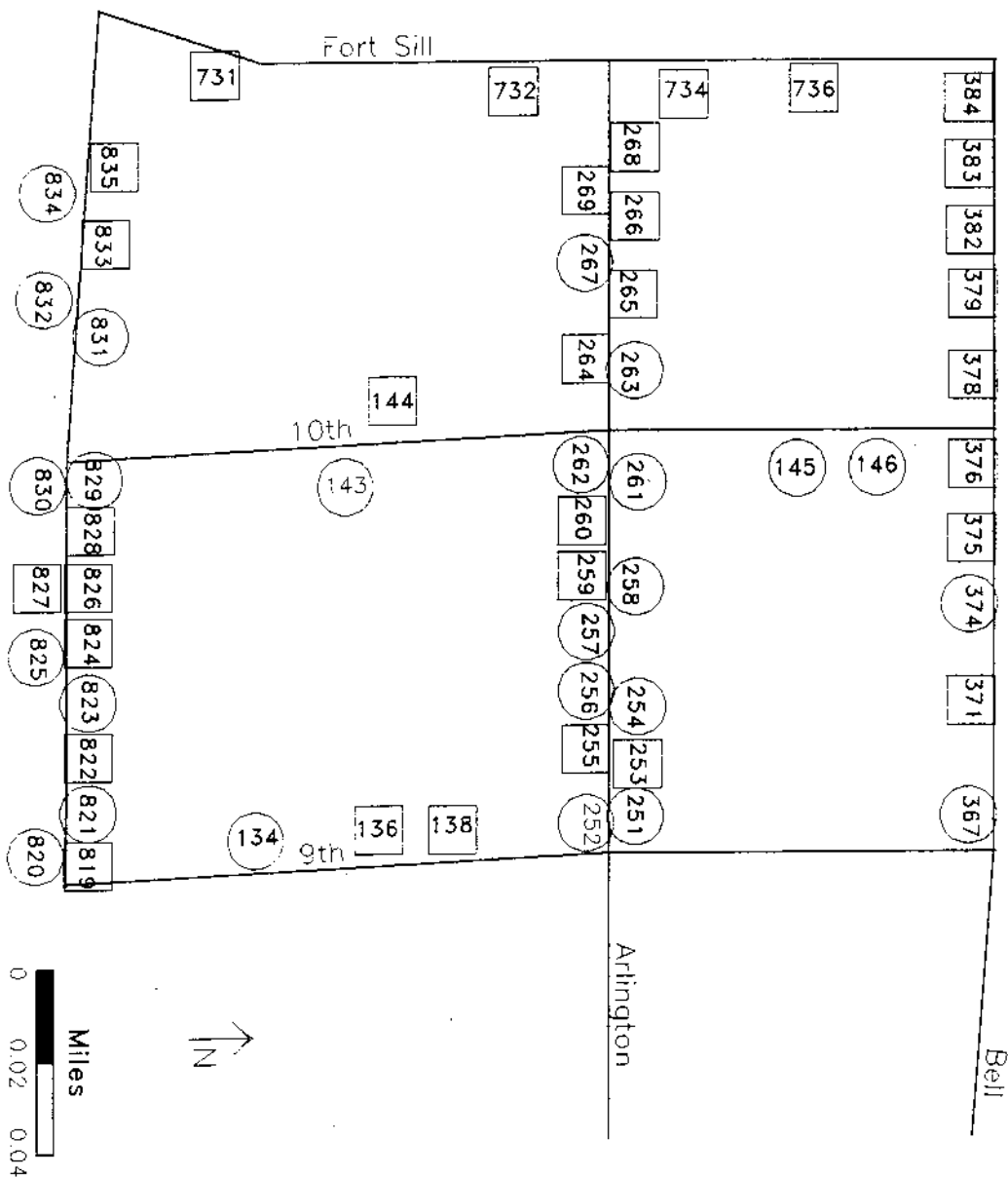
OLD TOWN NORTH HISTORIC DISTRICT AREA ELEVEN: COORDINATE LOCATIONS



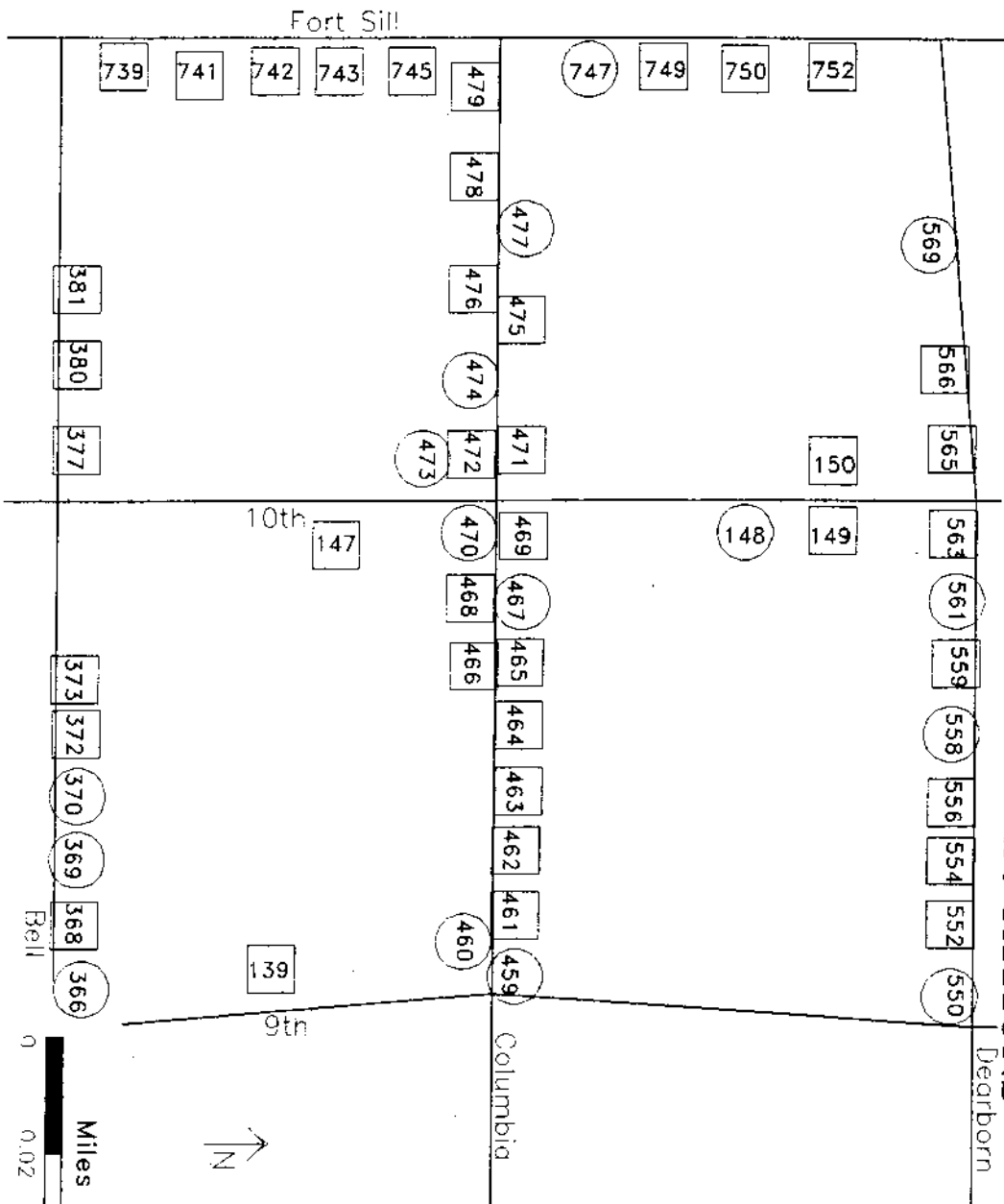
OLD TOWN NORTH HISTORIC DISTRICT AREA TWELVE: COORDINATE LOCATIONS



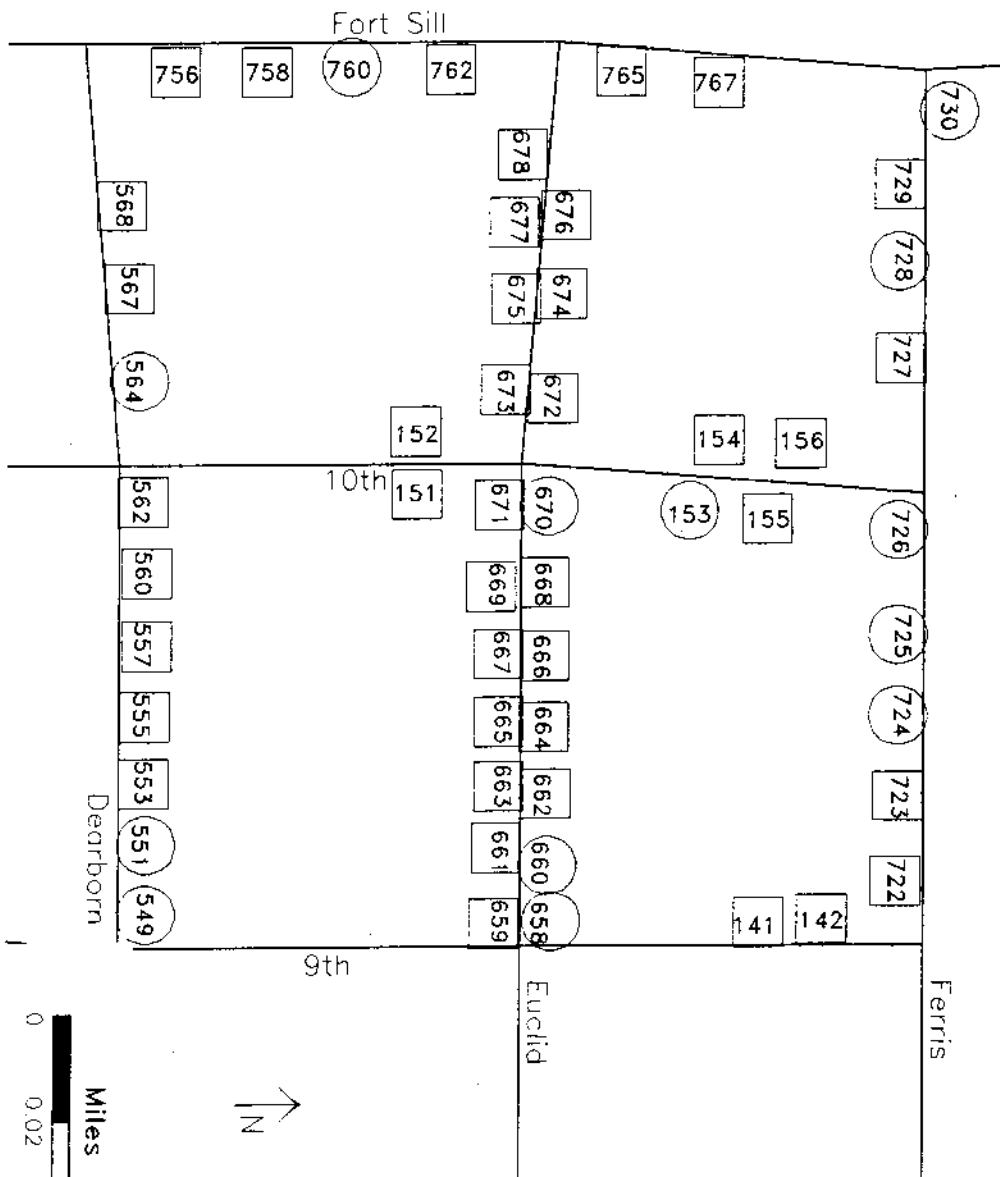
OLD TOWN NORTH HISTORIC DISTRICT AREA THIRTEEN: COORDINATE LOCATIONS



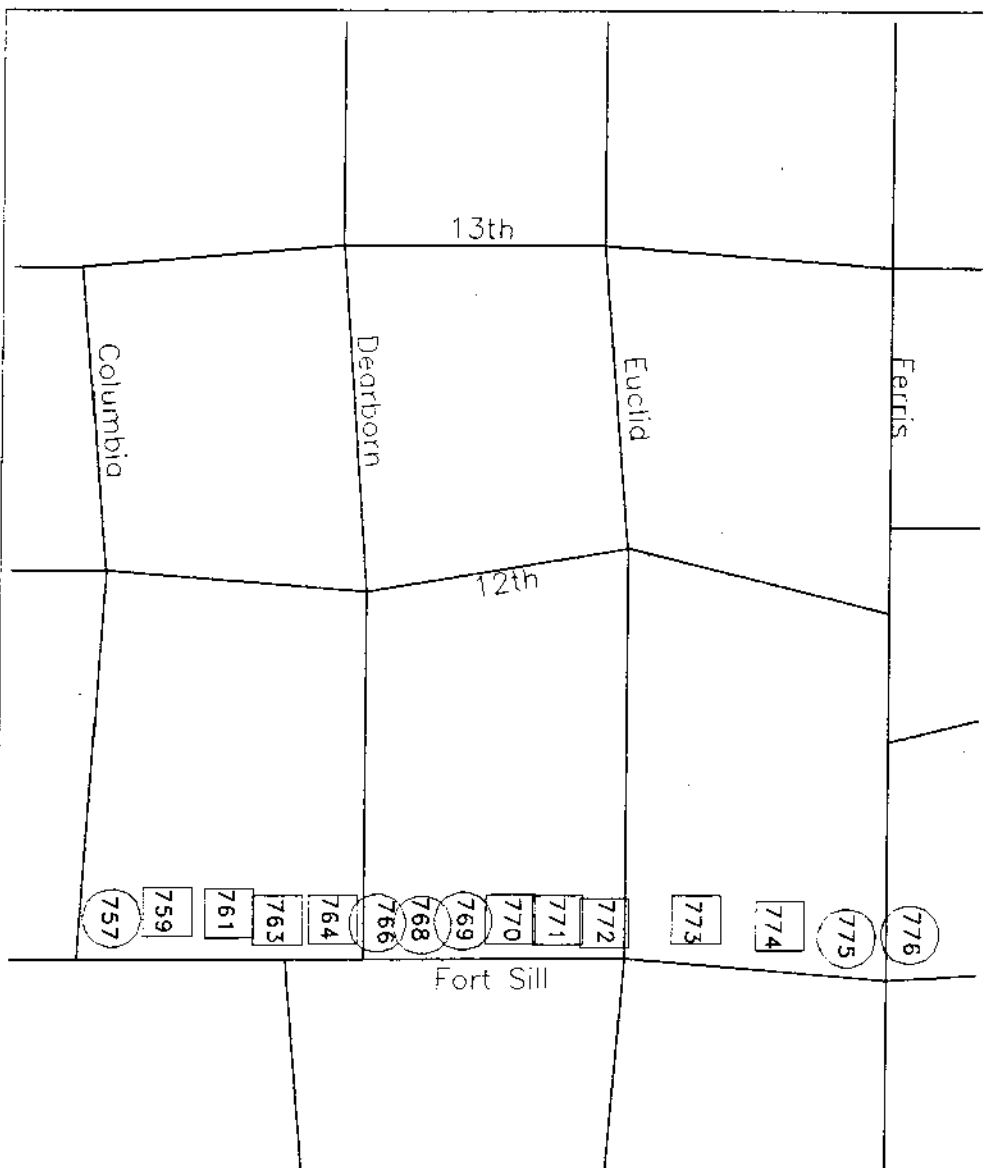
OLD TOWN NORTH HISTORIC DISTRICT AREA FOURTEEN: COORDINATE LOCATIONS



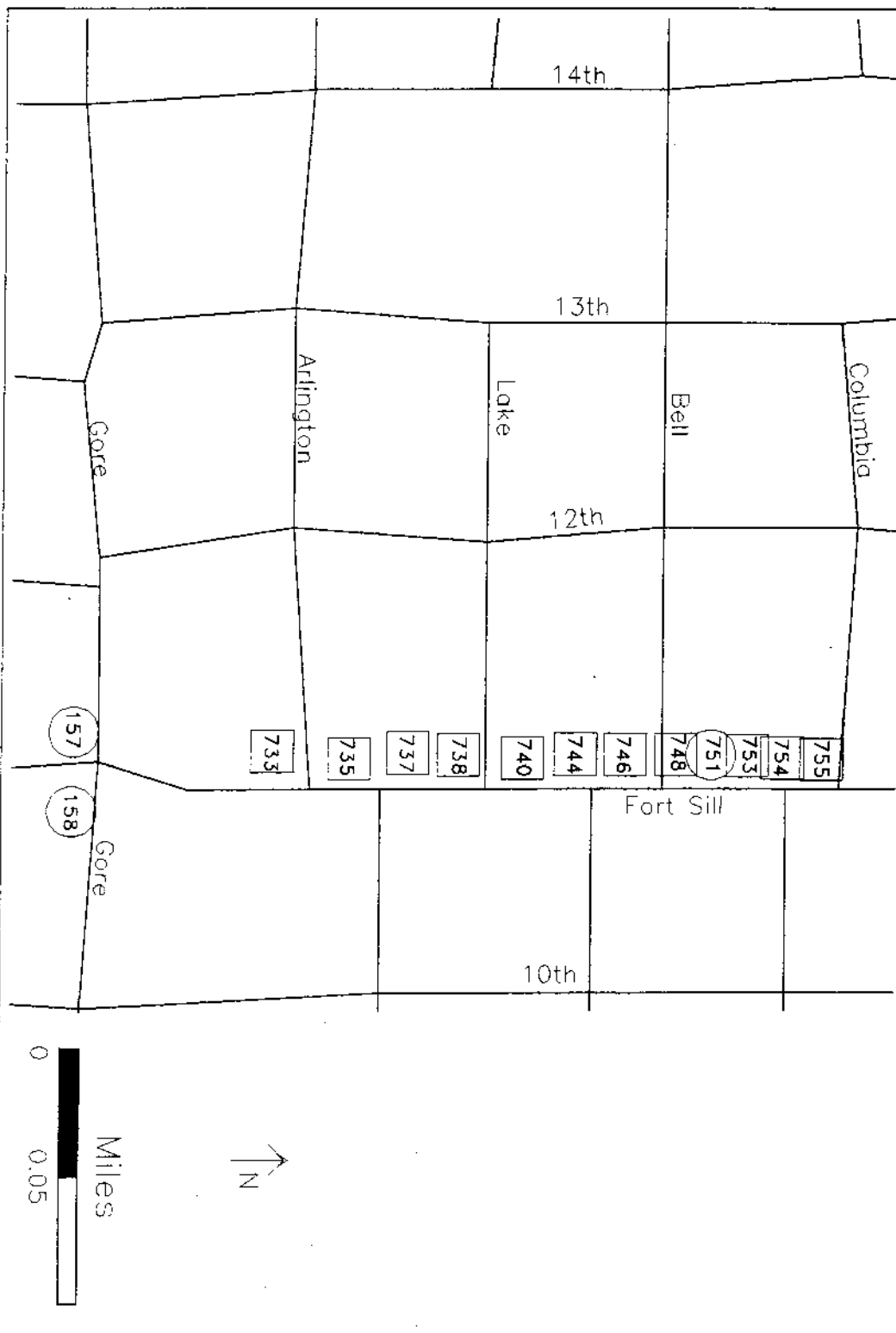
OLD TOWN NORTH HISTORIC DISTRICT AREA FIFTEEN: COORDINATE LOCATIONS



OLD TOWN NORTH HISTORIC DISTRICT AREA SIXTEEN: COORDINATE LOCATIONS



OLD TOWN NORTH HISTORIC DISTRICT AREA SEVENTEEN: COORDINATE LOCATIONS





MAPS SHOWING RESOURCES BY PERIOD OF CONSTRUCTION

The following maps depict the resources within the study area according to their individual period of construction. They provide a visual representation of the district's physical evolution over time. Once again, those resources indicated by squares were deemed contributing to the Old Town North Historic District, while those encircled were classified as non-contributing.

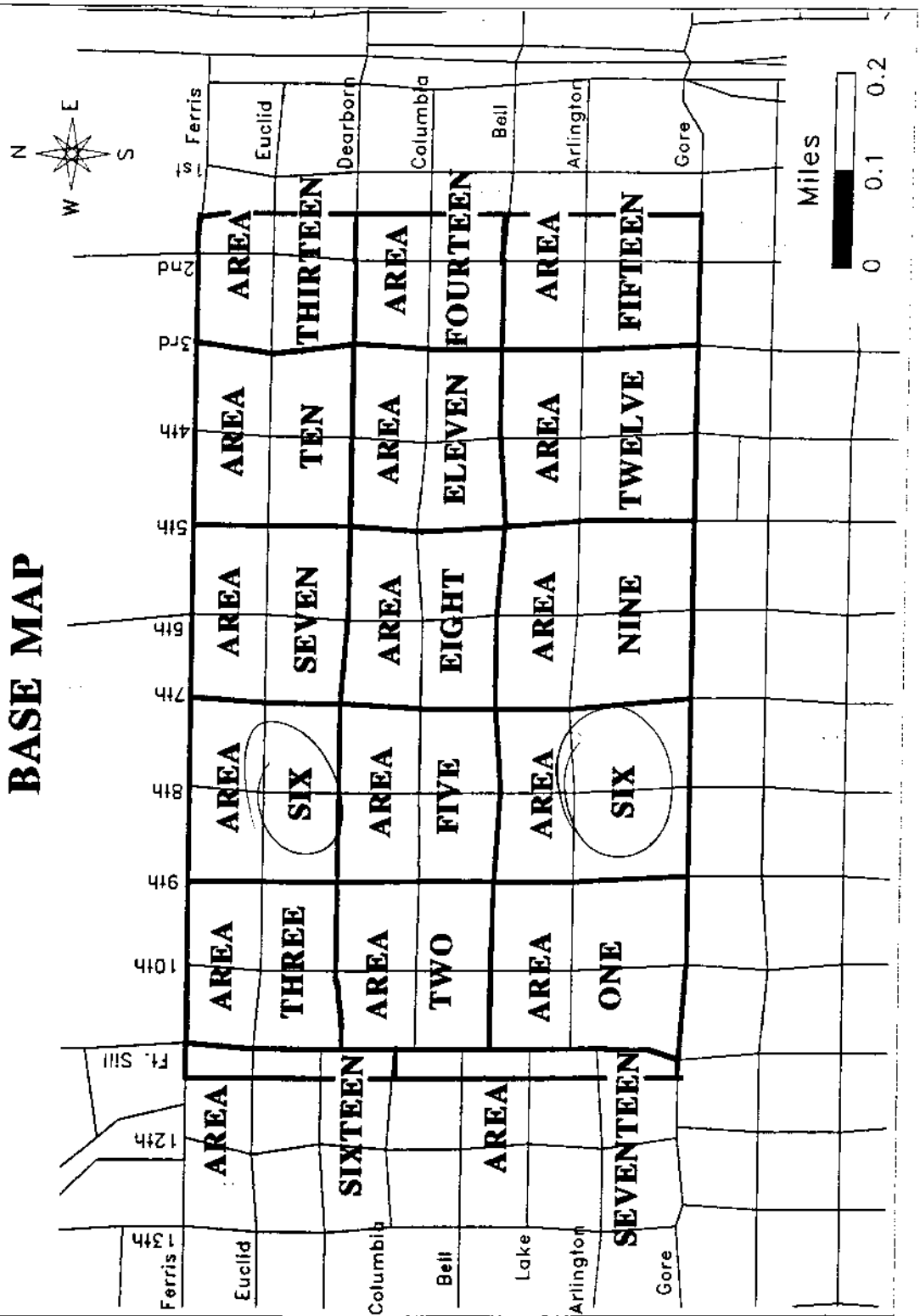
Limited space on the maps made inclusion of the map coordinate impossible, so for individual resources, these maps should be used in conjunction with the maps having coordinates for all the resources surveyed, as well as the lists of all resources documented, the list of contributing properties, and the list of non-contributing properties. All these are found elsewhere in this report.

LEGEND

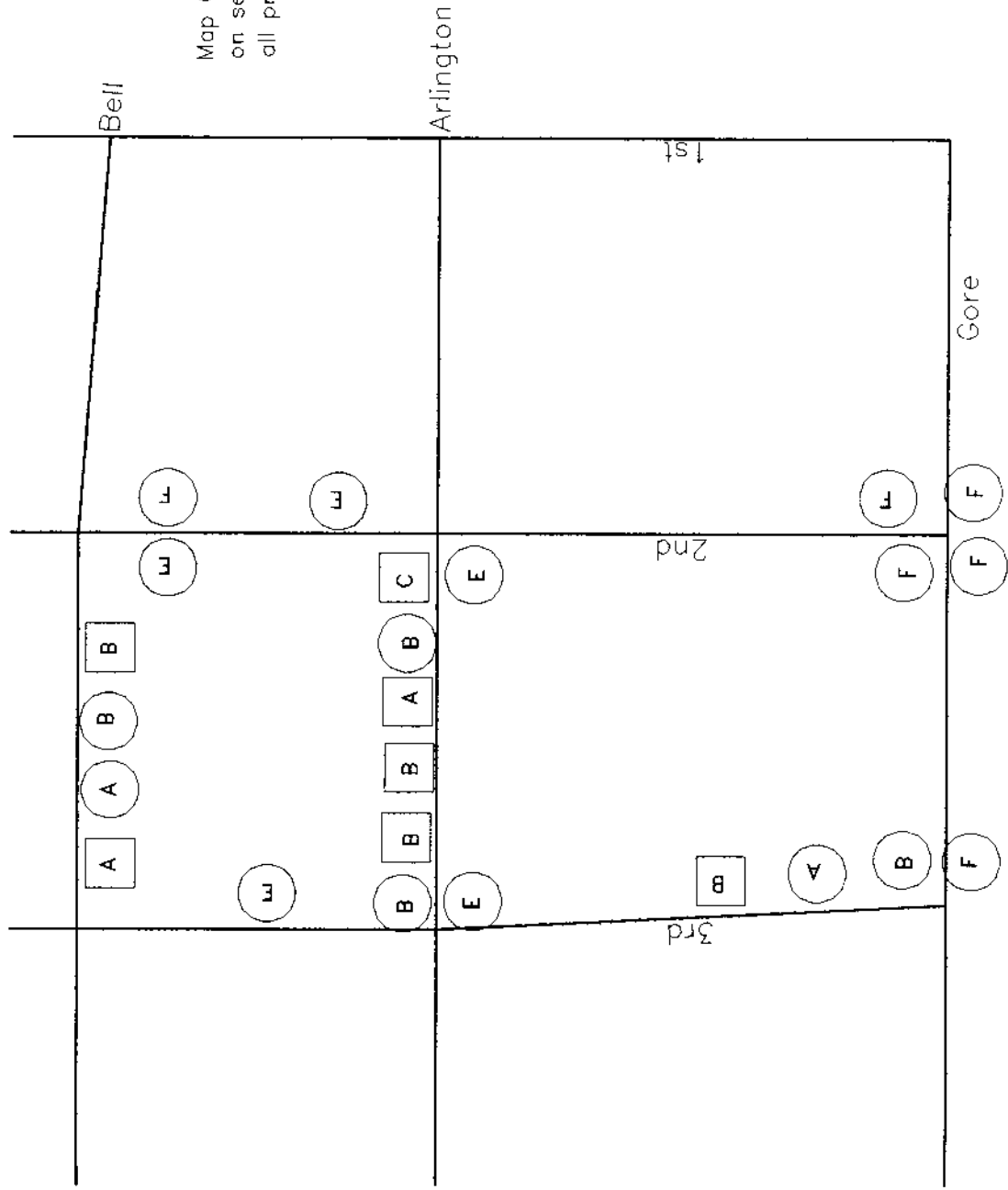
-  = Contributing
 = Non-Contributing
 A = 1901-1919
 B = 1920-1929
 C = 1930-1939
 D = 1940-1949
 E = 1950-1959
 F = 1960 and later

The Cartography was completed by geographer Brian Schulz using Atlas GIS software and Tiger files created by the U.S. Geologic Survey and the U.S. Census Bureau for cartographic purposes.

OLD TOWN NORTH HISTORIC DISTRICT BASE MAP

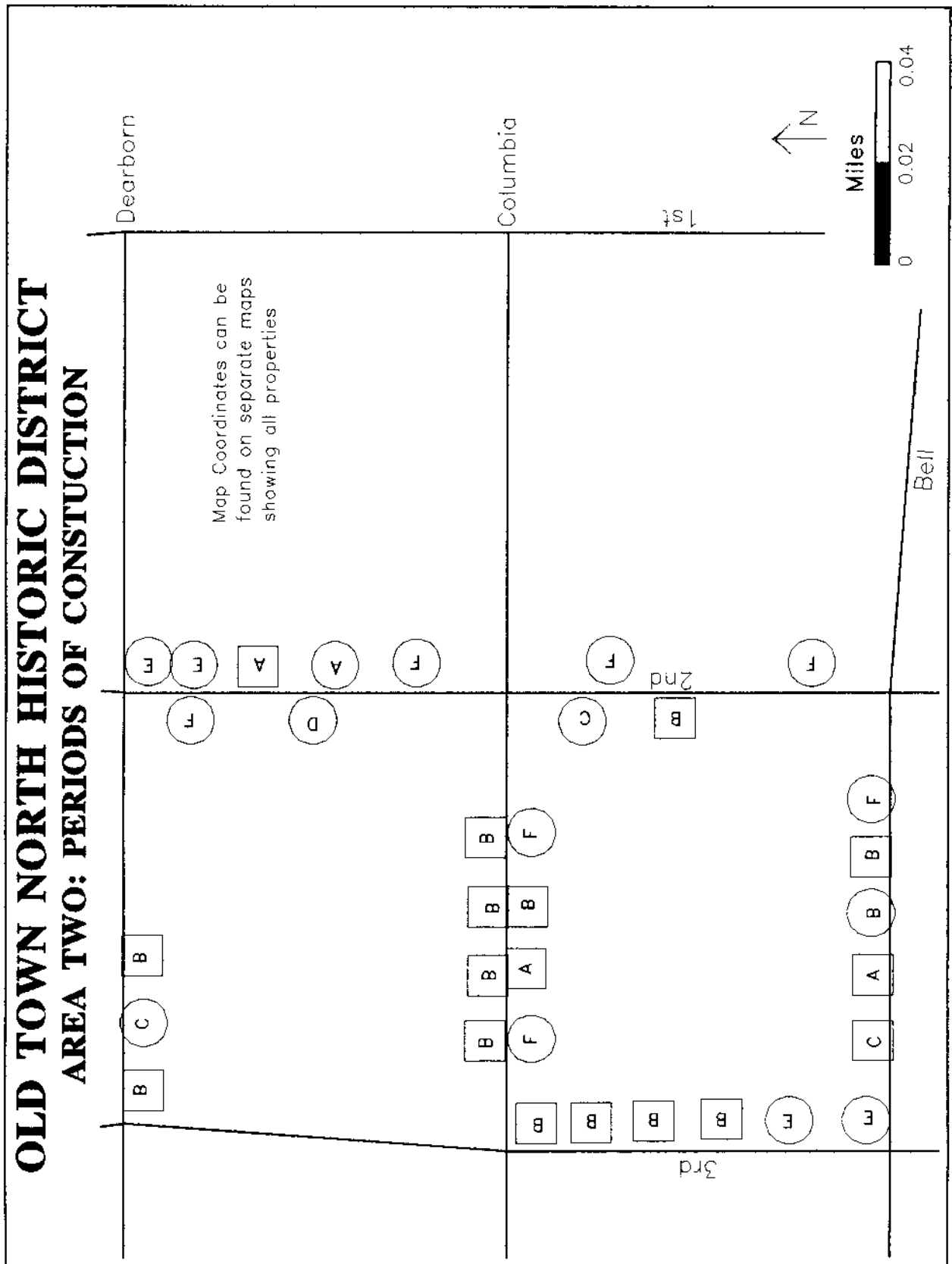


OLD TOWN NORTH HISTORIC DISTRICT **AREA ONE: PERIODS OF CONSTRUCTION**



94

OLD TOWN NORTH HISTORIC DISTRICT **AREA TWO: PERIODS OF CONSTRUCTION**



OLD TOWN NORTH HISTORIC DISTRICT

AREA THREE: PERIODS OF CONSTRUCTION

Map Coordinates can be found on separate maps showing all properties.

Ferris

Euclid

1st

2nd

3rd

Dearborn

Miles

0 0.02 0.04

A

C

E

F

Map Coordinates can be found on separate maps showing all properties.

Dearborn

A diagram showing a vector labeled z pointing to the left. The vector is represented by a horizontal line with an arrowhead at the left end. The label z is placed above the vector.

1st

2nd

3rd

A

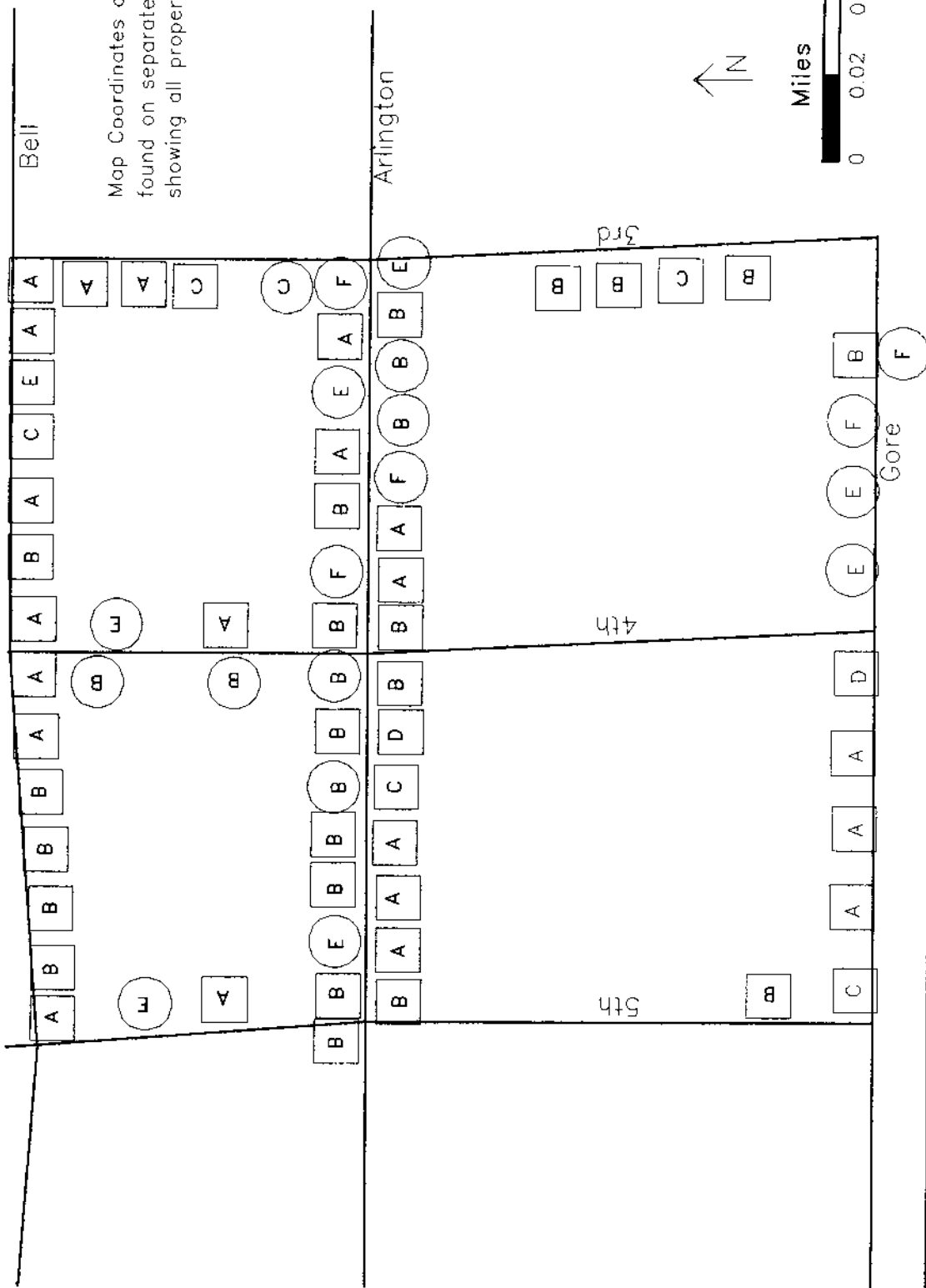
☐

Ferris

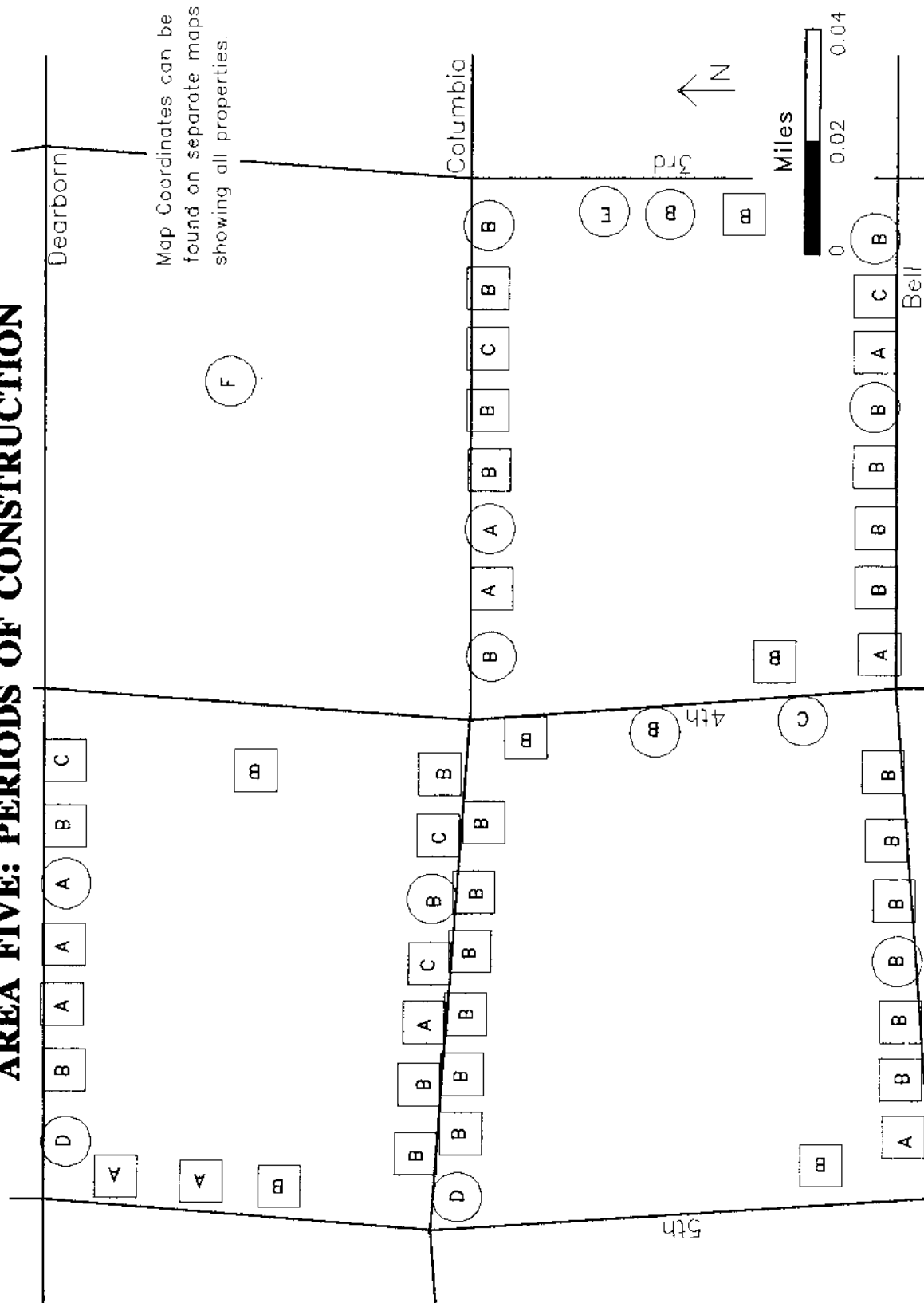
Euclid

96

OLD TOWN NORTH HISTORIC DISTRICT **AREA FOUR: PERIODS OF CONSTRUCTION**



OLD TOWN NORTH HISTORIC DISTRICT **AREA FIVE: PERIODS OF CONSTRUCTION**



OLD TOWN NORTH HISTORIC DISTRICT

AREA SIX: PERIODS OF CONSTRUCTION

Map Coordinates can be found on separate maps showing all properties.

Map showing property boundaries and construction periods (A, B, C, D, E, F) for Area Six of the Old Town North Historic District. The map includes streets 3rd, 4th, and 5th, and the intersection of Euclid and Dearborn. A scale bar indicates distances in miles (0 to 0.04). A north arrow is present.

The map displays a grid of streets with property lots marked by letters A through F, indicating different construction periods. The streets shown are 3rd, 4th, and 5th, running horizontally, and Euclid and Dearborn, running vertically. A north arrow points towards the top right, and a scale bar at the bottom right shows distances from 0 to 0.04 miles.

Construction Periods:

- Period A:** Located on the east side of 3rd, between Euclid and Dearborn; on the west side of 4th, between Euclid and Dearborn; on the east side of 5th, between Euclid and Dearborn.
- Period B:** Located on the west side of 3rd, between Euclid and Dearborn; on the east side of 4th, between Euclid and Dearborn; on the west side of 5th, between Euclid and Dearborn.
- Period C:** Located on the east side of 3rd, between Euclid and Dearborn; on the west side of 4th, between Euclid and Dearborn; on the east side of 5th, between Euclid and Dearborn.
- Period D:** Located on the east side of 3rd, between Euclid and Dearborn; on the west side of 4th, between Euclid and Dearborn; on the east side of 5th, between Euclid and Dearborn.
- Period E:** Located on the west side of 3rd, between Euclid and Dearborn; on the east side of 4th, between Euclid and Dearborn; on the west side of 5th, between Euclid and Dearborn.
- Period F:** Located on the east side of 3rd, between Euclid and Dearborn; on the west side of 4th, between Euclid and Dearborn; on the east side of 5th, between Euclid and Dearborn.

Map Coordinates can be found on separate maps showing all properties.

The map shows a grid of streets. The vertical streets are labeled 3rd, 4th, and 5th from left to right. The horizontal streets are labeled Euclid and Dearborn from top to bottom. Properties are marked with letters A, B, C, D in circles or squares. A scale bar at the bottom right shows 0 to 0.04 miles. A north arrow points towards the top right.

Map Coordinates can be found on separate maps showing all properties.

	Dearborn	\bar{y}	s^2	s^2